
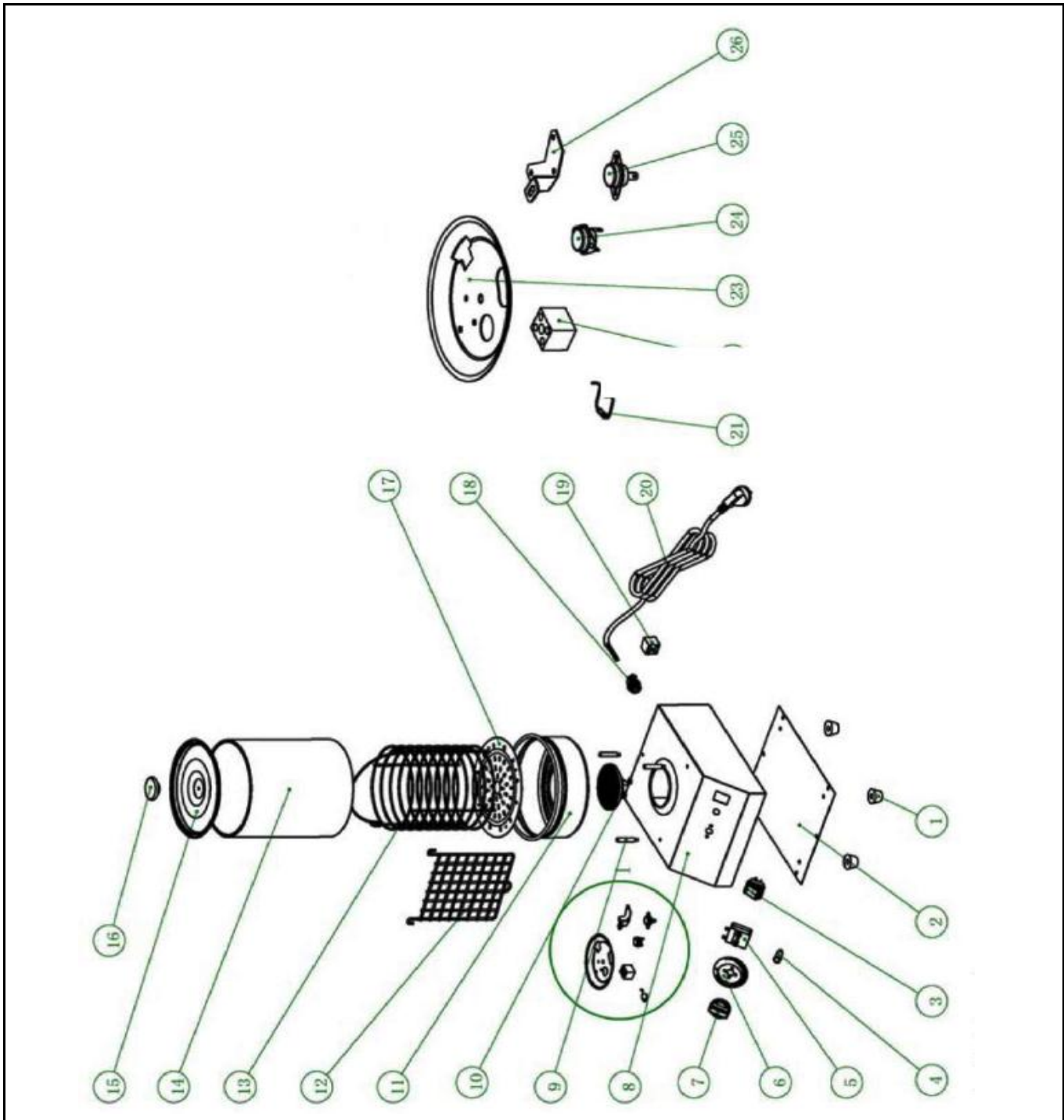



Drawing

 HENDI FOOD SERVICE EQUIPMENT Hendi B.V. Steenoven 21 3911 TX Rhenen The Netherlands	Batch #	Appliance part#
	202185 and up	265000
	Description	
	Sausage warmer	

Date	26-02-2013	Revision #	Revision version 1.1
Revision	New design.		



Bill of materials (BOM)

 HENDI <small>FOOD SERVICE EQUIPMENT</small> Hendi B.V. Steenoven 21 3911 TX Rhenen The Netherlands	Batch #	Appliance part#
	202185 and up	265000
	Description	
	Sausage warmer	


Date	26-02-2013	Revision #	Revision version 1.1
Revision	New design.		

Item	Description	Part#	Quantity	Remark	Picture
1	Feet	921159	4		
2	Bottom cover	n/a	1		
3	Switch	205426	1		
4	Indicator light	921111	1		
5	Energy regulator	201121	1		
6	Graduation plate	nss	1	Available as 921104	
7	Knob	921104	1	Incl item 6	
8	Housing	n/a	1		
9	Pin	n/a	3		
10	Heating element	930298	1		
11	Water pan	930304	1		
12	Grid	nss	1	Available as 930359	
13	Grid complete	930359	1	Incl item 12 and 17	
14	Glas cilinder	921135	1		
15	Lid	930311	1	Incl item 16	
16	Knob lid	nss	1	Available as 930311	
17	Lower grid	nss	1	Available as 930359	
18	Inlet with retention	912201	1		
19	Terminal	922545	1		
20	Power cord H05RN-F 3Gx1,0mm ²	930038	1		
21	Thermal fuse 240°C	930328	1		
22	Terminal	922545	1		
23	Cover element	n/a	1		
24	Clixon 190°C	930335	1		
25	Clixon 220°C	930342	1		
26	Bracket	n/a	1		

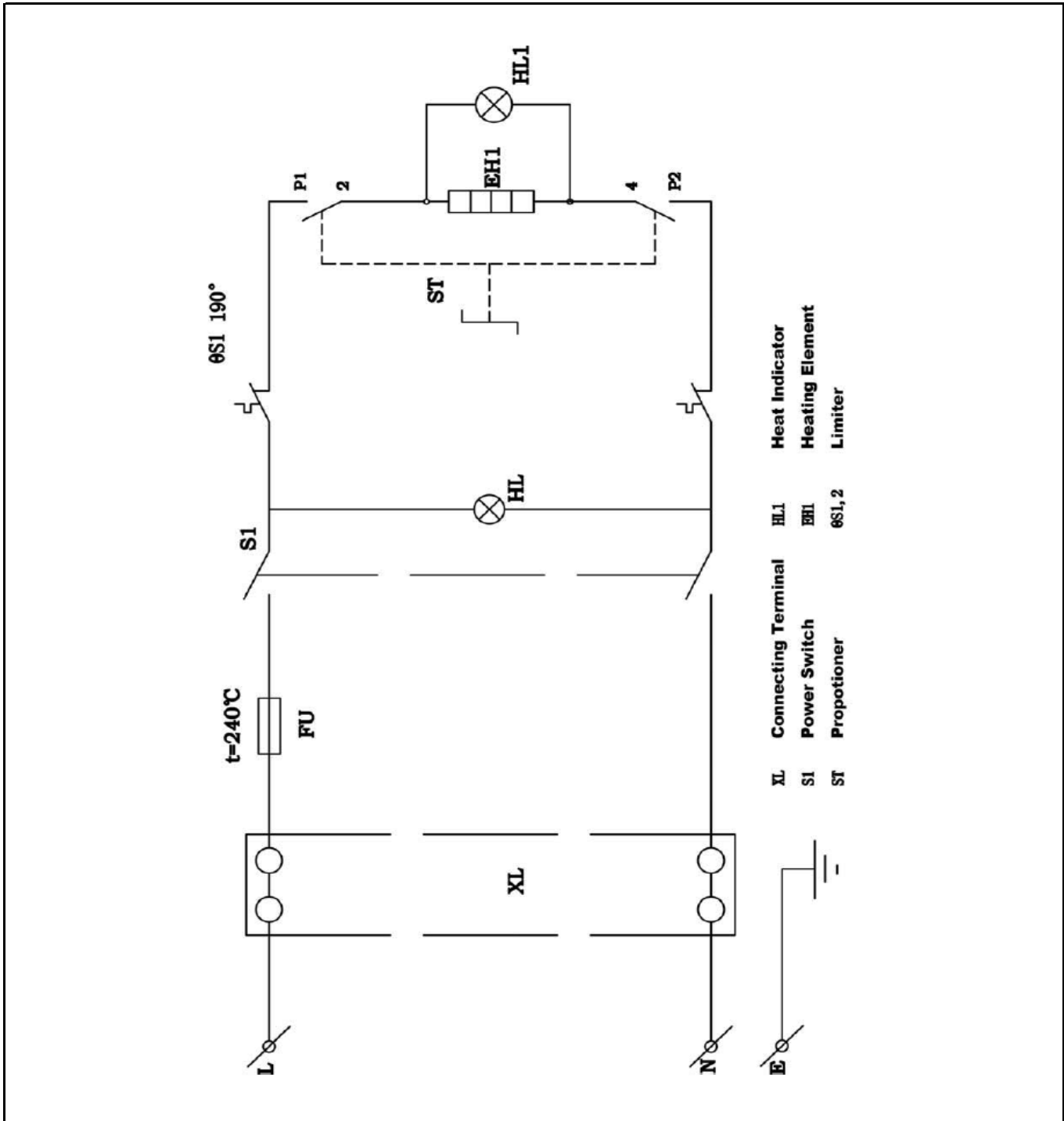
n/a -> not available

nss -> not sold separately


Circuit diagram

 <p>Hendi B.V. Steenoven 21 3911 TX Rhenen The Netherlands</p>	Batch #	Appliance part#
	202185 and up	265000
	Description	
	Sausage warmer	

Date	26-02-2013	Revision #	Revision version 1.1
Revision	New design.		



Wiring diagram

 <b style="font-size: 2em; color: red;">H E N D I FOOD SERVICE EQUIPMENT Hendi B.V. Steenoven 21 3911 TX Rhenen The Netherlands	Batch #	Appliance part#
	202185 and up	265000
	Description	
	Sausage warmer	

Date	26-02-2013	Revision #	Revision version 1.1
Revision	New design.		

