
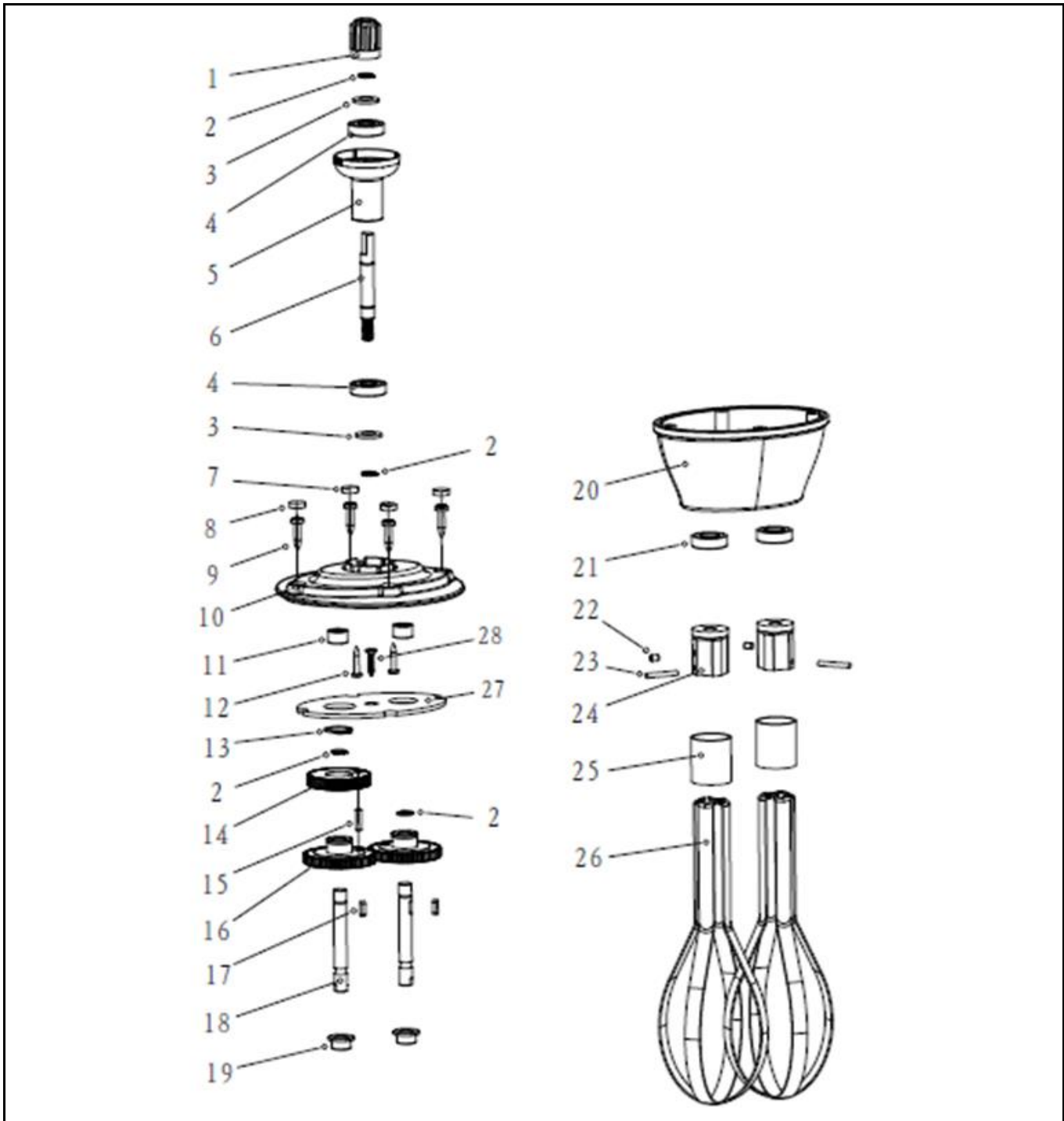



Drawing

 <b>HENDI</b> FOOD SERVICE EQUIPMENT  <b>Hendi B.V.</b> Steenoven 21 3911 TX Rhenen The Netherlands	Batch #	Appliance part#
	000000 and up	<b>222164</b>
	Description	
	Whisk attachment for stickblender 222140	

Date	26-07-2016	Revision #	Revision version
Revision	First bill of materials (BOM)		



### Bill of materials (BOM)

 <b>HENDI</b> <small>FOOD SERVICE EQUIPMENT</small>  <b>Hendi B.V.</b> Steenoven 21 3911 TX Rhenen The Netherlands	<b>Batch #</b>	<b>Appliance part#</b>
	000000 and up	<b>222164</b>
	<b>Description</b>	
<b>Whisk attachment for stickblender 222140</b>		

<b>Date</b>	26-07-2016	<b>Revision #</b>	Revision version
<b>Revision</b>	First bill of materials (BOM)		

Item	Description	Part#	Quantity	Remark	Picture
1	Coupler male	941355	1		
2	Circlip Ø8	n/a	4		
3	Washer	n/a	2		
4	Bearing	n/a	2		
5	Connector	n/a	1		
6	Upper axle	n/a	1		
7	Cover	n/a	4		
8	Cover	n/a	4		
9	Screw	n/a	4		
10	Upper cover	n/a	1		
11	Needle bearing	n/a	2		
12	Screw	n/a	2		
13	Circlip Ø16	n/a	1		
14	Gear (A)	n/a	1		
15	Pin	n/a	1		
16	Gear (B)	n/a	2		
17	Key	n/a	2		
18	Axle	n/a	2		
19	Bushing	n/a	2		
20	Lower housing	n/a	1		
21	Oil seal	n/a	2		
22	Screw M4x5	n/a	2		
23	Pin	n/a	2		
24	Insert	n/a	2		
25	Bushing	n/a	2		
26	Whisk 185mm	n/a	2		
27	Sealing	n/a	1		
28	Screw	n/a	1		

n/a -> not available

nss -> not sold separately