
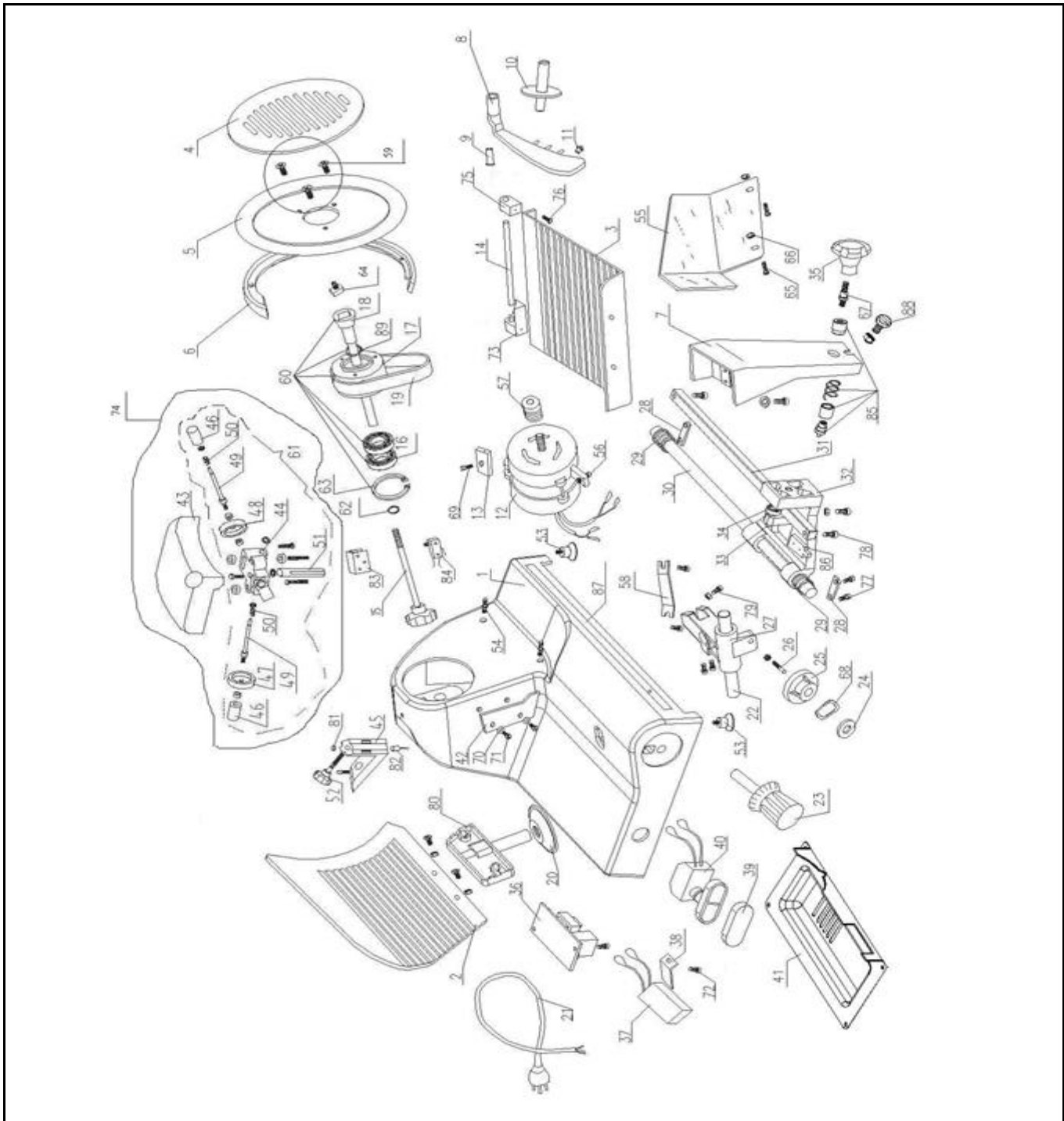



Drawing

 <b>HENDI</b> FOOD SERVICE EQUIPMENT  <b>Hendi B.V.</b> Steenoven 21 3911 TX Rhenen The Netherlands	<b>Batch #</b>	<b>Appliance part#</b>
	500140 and up	<b>210031</b>
	<b>Description</b>	
	Slicer Profi Line 195	

<b>Date</b>	25-11-2015	<b>Revision #</b>	Revision version
<b>Revision</b>	First bill of materials (BOM)		



## Bill of materials (BOM)

 <p><b>Hendi B.V.</b> Steenoven 21 3911 TX Rhenen The Netherlands</p>	<b>Batch #</b>	<b>Appliance part#</b>
	500140 and up	<b>210031</b>
	<b>Description</b>	
<b>Slicer Profi Line 195</b>		

<b>Date</b>	25-11-2015	<b>Revision #</b>	Revision version
<b>Revision</b>	First bill of materials (BOM)		


Item	Description	Part#	Quantity	Remark	Picture
1	Housing	n/a	1		
2	Plate (thickness adjustment)	935750	1		
3	Sledge complete	935736	1	Incl item 3,7,8,9,10,11,14,35,55,65,66,67,73,75,76,85,	
4	Guard disc blade	935743	1	Incl item 64	
5	Knife 195mm	935798	1		
6	Guard ring	n/a	1		
7	Bracket sledge	nss	1	Available as 935736	
8	Product holder	935767	1	Incl item 8,9,10,11 (Also in set 935736)	
9	Bushing	nss	1	Available as 935736	
10	Handle	nss	1	Available as 935736	
11	Block	nss	1	Available as 935736	
12	Motor 200W	935781	1		
13	Bracket motor	n/a	1		
14	Rod Ø12x185	nss		Available as 935736	
15	Bolt (guard disc)	935804			
16	Ball bearing	nss	2	Available as 935729	
17	Pulley	nss	1	Available as 935729	
18	Axle	nss	1	Available as 935729	
19	Belt (TB2-310x14)	910733	1	Also in set 935729	
20	Cover	n/a	1		
21	Power cord	930014	1		
22	Axle	n/a	1		
23	Knob thickness adjustment	924433	1		
24	Washer	n/a	1		
25	Cam	926475	1		
26	Pin	n/a	1		
27	Bracket plate thickness adjustment	n/a	1		
28	Retaining plate	n/a	2		
29	Spring	n/a	2		
30	Axle	n/a	1		
31	Guide bar	n/a	1		
32	Mounting bracket sledge	n/a	1		
33	Bolt M8x35	n/a	1		
34	Ball bearing 607	n/a	1		
35	Knob	nss	1	Available as 935736	
36	PCB	910788	1		
37	Capacitor	935774	1		
38	Bracket capacitor	n/a	1		
39	Cover switch	901847	1		
40	Switch	914953	1		
41	Bottom cover	935811	1		
42	Meat scraper	924440	1	Incl item 70 and 71	
43	Cap	nss	1	Available as 935712	
44	Bracket	nss	1	Available as 935712	
45	Holder grinding unit	n/a	1		
46	Knob	nss	2	Available as 935712	
47	Grinding stone (fine)	901793	1	Also in set 935712	
48	Grinding stone (course)	926482	1	Also in set 935712	
49	Pin	nss	2	Available as 935712	
50	Spring	nss	2	Available as 935712	
51	Pin incl magnet	nss	1	Available as 935712	
52	Knob	n/a	1		
53	Feet	901830	4		

54	Stud	n/a	3		
55	Guard sledge	924457	1	Incl item 65, 66 and also in set 935736	
56	Adjusting bolt motor	n/a	1		
57	Pully motor	924464	1		
58	Slide bracket	n/a	1		
59	Screw knife	n/a	3		
60	Axle complete assembly	935729	1	Incl item 16,17,18,19,62,63 and 89	
62	Circlip	nss	1	Available as 935729	
63	Circlip	nss	1	Available as 935729	
64	Nut Guard disc	nss	1	Available as 935743	
65	Bolt	nss	2	Available as 935736	
66	Nut	nss	2	Available as 935736	
67	Bolt	nss	1	Available as 935736	
68	Waved washer	n/a	1		
69	Bolt	n/a	1		
70	Washer	nss	2	Available as 924440	
71	Bolt	nss	2	Available as 924440	
72	Bolt	n/a	1		
73	Rod holder A	nss	1	Available as 935736	
74	Grinding unit complete	935712	1	Incl item 43,44,46,47,48,49,50,51,81	
75	Rod holder B	nss	1	Available as 935736	
76	Screw countersunk head M6x12	nss	2	Available as 935736	
77	Bolt	n/a	4		
78	Bolt	n/a	2		
79	Adjusting bolt	n/a	1		
80	Bracket (plate thickness adjustment)	n/a	1		
81	Magnet	nss	1	Available as 935712	
82	Magnet switch	910696	1		
83	Holder microswitch	n/a	1		
84	Microswitch	910689	1		
85	Locking pin system	nss	1	Available as 935736	
86	Limiter	n/a	1		
87	Guide	n/a	1		
88	Bolt	n/a	1		
89	Oil seal	nss	1	Available as 935729	

n/a -> not available

nss -> not sold separately

### Circuit diagram

 <b>HENDI</b> FOOD SERVICE EQUIPMENT <b>Hendi B.V.</b> Steenoven 21 3911 TX Rhenen The Netherlands	<b>Batch #</b>	<b>Appliance part#</b>
	500140 and up	<b>210031</b>
	<b>Description</b>	
	Slicer Profi Line 195	

<b>Date</b>	25-11-2015	<b>Revision #</b>	Revision version
<b>Revision</b>	First bill of materials (BOM)		

