

Drawing



Tools for Chefs

Hendi B.V.  
Steenoven 21  
3911 TX Rhenen  
The Netherlands

Batch #

V.01

Appliance part#

282779

Description

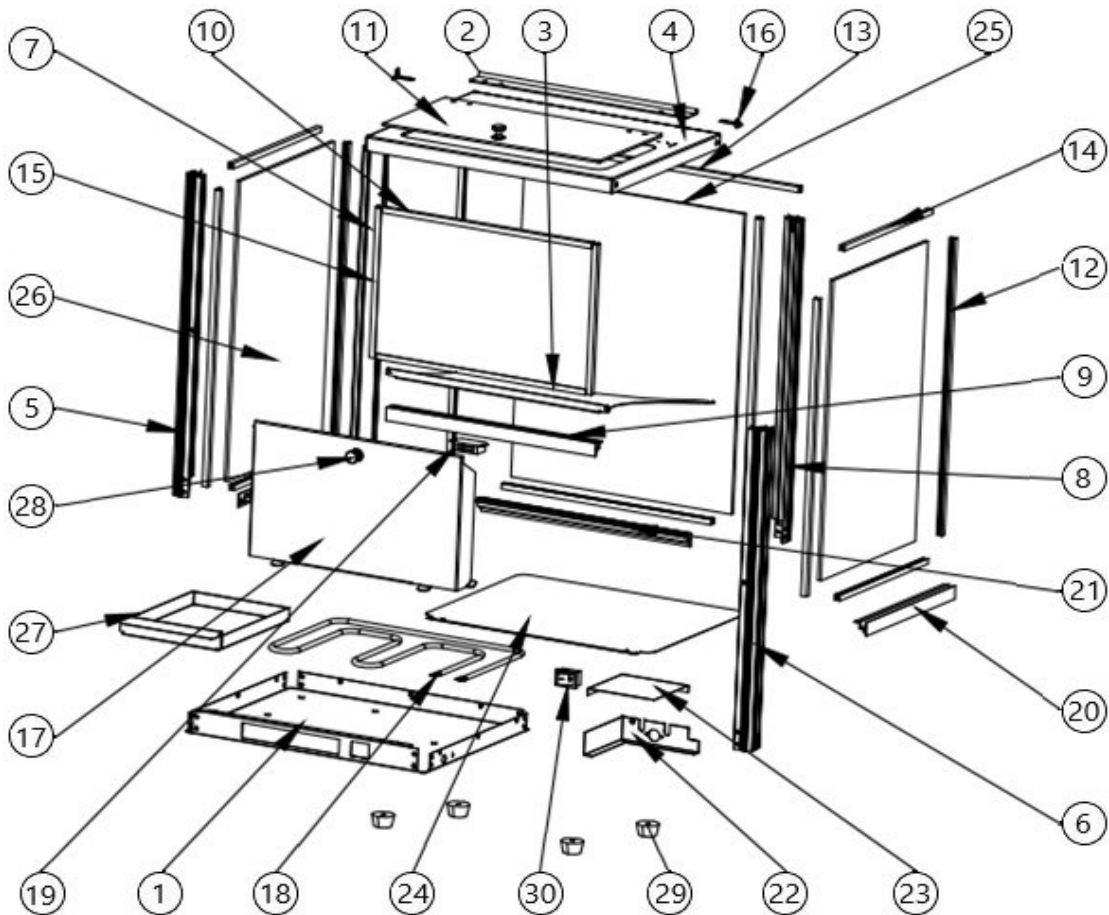
Nacho warmer Black edition

Date 21-03-2023


Revision #

V.01

Revision First Bill of Materials (BOM)



## Bill of materials (BOM)

 <b style="font-size: 24px; margin-left: 10px;">HENDI</b> <small style="color: green; margin-left: 10px;">Tools for Chefs</small> <b>Hendi B.V.</b> Steenoven 21 3911 TX Rhenen The Netherlands	<b>Batch #</b>	<b>Appliance part#</b>
	V.01	<b>282779</b>
	<b>Description</b>	
	<b>Nacho warmer Black edition</b>	


<b>Date</b>	21-03-2023	<b>Revision #</b>	V.01
<b>Revision</b>	First Bill of Materials (BOM)		

Item	Description	Part#	Quantity	Remark	Picture
1	Housing cover (bottom)	n/a	1		
2	Aluminum strip	n/a	1		
3	Seperating bracket	n/a	1		
4	Housing cover (top)	n/a	1		
5	Housing pillar (front-left)	n/a	1		
6	Housing pillar (front-right)	n/a	1		
7	Housing pillar (back-left)	n/a	1		
8	Housing pillar (back-right)	n/a	1		
9	Glass holder (front-bottom)	n/a	1		
10	Glass panel (front)	n/a	1		
11	Upper lid	n/a	1		
12	Gasket long	n/a	6		
13	Gasket medium	n/a	4		
14	Gasket short	n/a	4		
15	Front glass gasket	n/a	1		
16	Bracket	n/a	2		
17	Front lid	n/a	1		
18	Heating element	957790	1		
19	Lid magnet	n/a	1		
20	Glass holder (front-sides)	n/a	2		
21	Glass holder (back)	n/a	1		
22	Bracket	n/a	1		
23	Bracket cover	n/a	1		
24	Inner bottom cover	n/a	1		
25	Glass panel (back)	n/a	1		
26	Glass panel (left/right)	n/a	1		
27	Drawer	n/a	1		
28	Lid knob	n/a	2		
29	Feet	962688	4		
30	Switch	962695	1		
*	Chamber light	962701	1	Not shown on drawing	
*	Thermostat	962718	1	Not shown on drawing	

n/a -> not available

nss -> not sold separately

### Circuit diagram

 <b>HENDI</b> Tools for Chefs Hendi B.V. Steenoven 21 3911 TX Rhenen The Netherlands	<b>Batch #</b>	<b>Appliance part#</b>
	V.01	<b>282779</b>
	<b>Description</b>	
	Nacho warmer Black edition	

<b>Date</b>	21-03-2023	<b>Revision #</b>	V.01
<b>Revision</b>	First Bill of Materials (BOM)		

