

Drawing



Hendi B.V.
Steenoven 21
3911 TX Rhenen
The Netherlands

Batch #
202185 until
HK071321

Appliance part#
265000

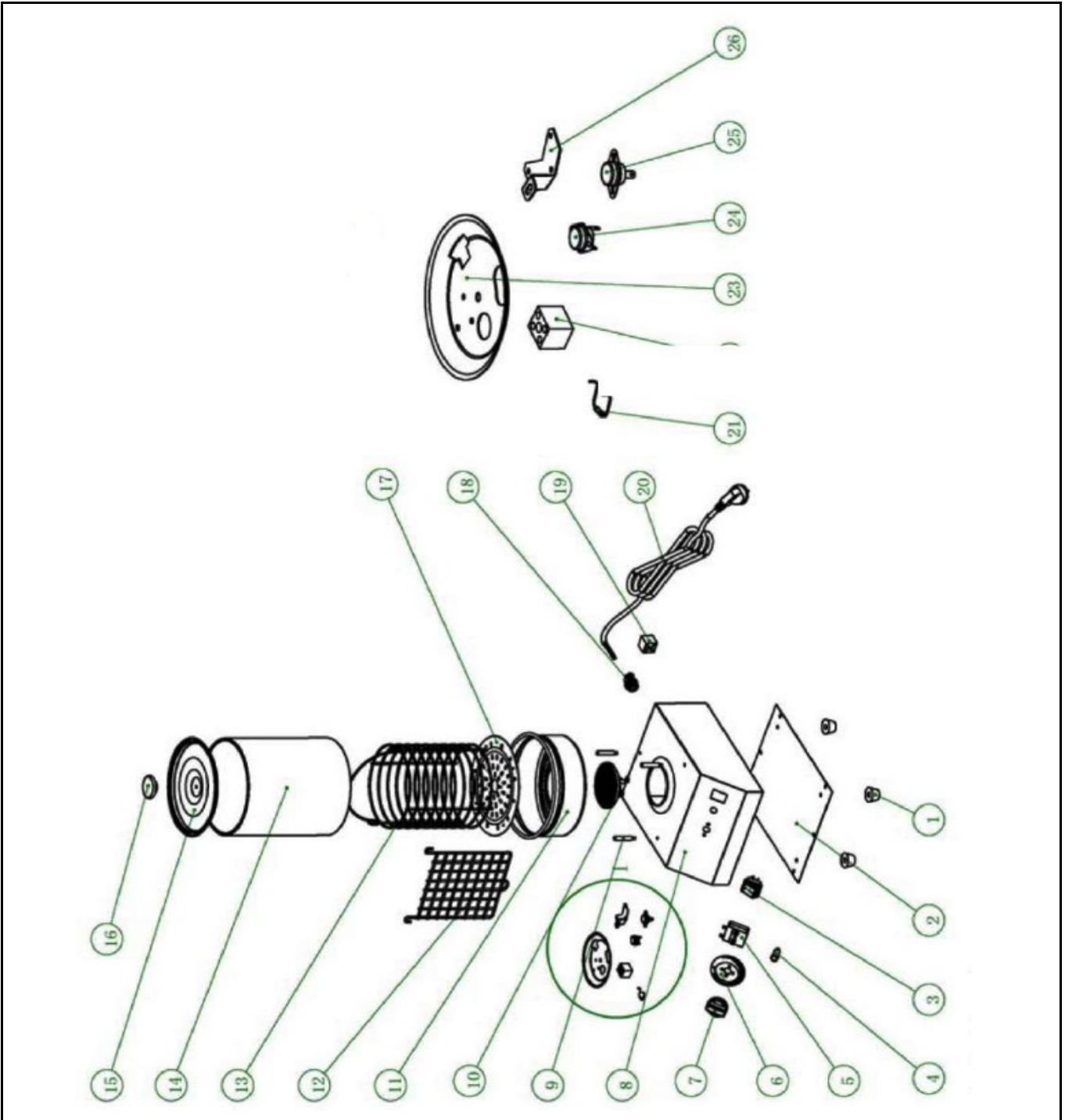
Description
Sausage warmer

Date 06-09-2022


Revision #

Revision version 1.1

Revision New design.



Bill of materials (BOM)

| | | |
|--|--------------------------|------------------------|
|  <p>Hendi B.V. Steenoven 21 3911 TX Rhenen The Netherlands</p> | Batch # | Appliance part# |
| | 202185 until HK071321 | 265000 |
| | Description | |
| Sausage warmer | | |


| | | | |
|-----------------|-------------|-------------------|----------------------|
| Date | 06-09-2022 | Revision # | Revision version 1.1 |
| Revision | New design. | | |

| Item | Description | Part# | Quantity | Remark | Picture |
|------|--|--------|----------|---------------------|---------|
| 1 | Feet | 921159 | 4 | | |
| 2 | Bottom cover | n/a | 1 | | |
| 3 | Switch | 205426 | 1 | | |
| 4 | Indicator light | 921111 | 1 | | |
| 5 | Energy regulator | 201121 | 1 | | |
| 6 | Graduation plate | nss | 1 | Available as 921104 | |
| 7 | Knob | 921104 | 1 | Incl item 6 | |
| 8 | Housing | n/a | 1 | | |
| 9 | Pin | n/a | 3 | | |
| 10 | Heating element | 930298 | 1 | | |
| 11 | Water pan | 930304 | 1 | | |
| 12 | Grid | nss | 1 | Available as 930359 | |
| 13 | Grid complete | 930359 | 1 | Incl item 12 and 17 | |
| 14 | Glas cilinder | 921135 | 1 | | |
| 15 | Lid | 930311 | 1 | Incl item 16 | |
| 16 | Knob lid | nss | 1 | Available as 930311 | |
| 17 | Lower grid | nss | 1 | Available as 930359 | |
| 18 | Inlet with retention | 912201 | 1 | | |
| 19 | Terminal | 922545 | 1 | | |
| 20 | Power cord H05RN-F 3Gx1,0mm ² | 930038 | 1 | | |
| 21 | Thermal fuse 240°C | 930328 | 1 | | |
| 22 | Terminal | 922545 | 1 | | |
| 23 | Cover element | n/a | 1 | | |
| 24 | Clixon 190°C | 930335 | 1 | | |
| 25 | Clixon 220°C | 930342 | 1 | | |
| 26 | Bracket | n/a | 1 | | |
| | | | | | |
| | | | | | |

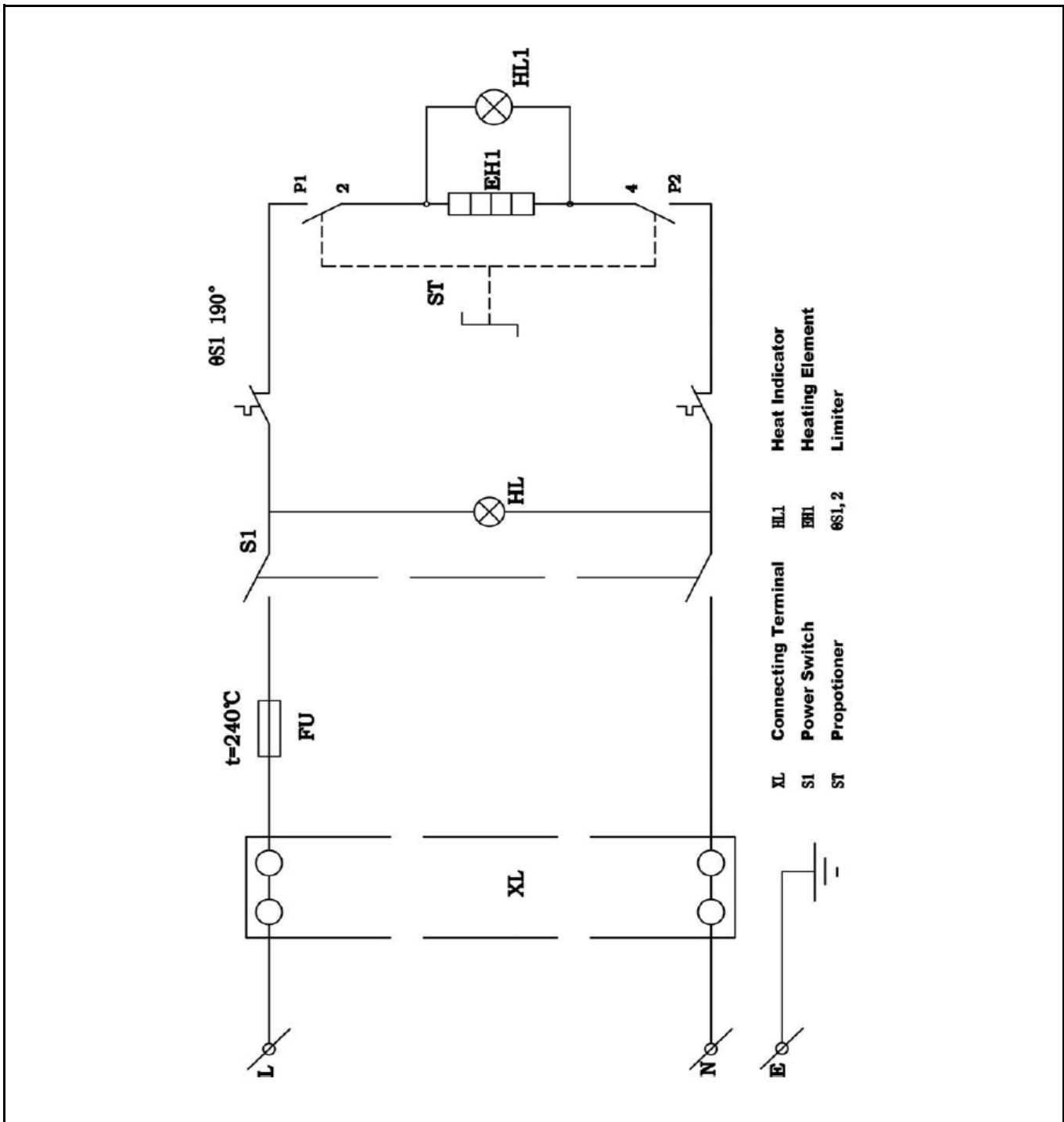
n/a -> not available

nss -> not sold separately


Circuit diagram

| | | |
|--|--------------------------|------------------------|
|  HENDI FOOD SERVICE EQUIPMENT Hendi B.V. Steenoven 21 3911 TX Rhenen The Netherlands | Batch # | Appliance part# |
| | 202185 until HK071321 | 265000 |
| | Description | |
| | Sausage warmer | |

| | | | |
|-----------------|-------------|-------------------|----------------------|
| Date | 06-09-2022 | Revision # | Revision version 1.1 |
| Revision | New design. | | |



Wiring diagram

| | | |
|---|--------------------------|------------------------|
|  <b style="font-size: 2em; color: red; margin-left: 10px;">HENDI FOOD SERVICE EQUIPMENT Hendi B.V. Steenoven 21 3911 TX Rhenen The Netherlands | Batch # | Appliance part# |
| | 202185 until HK071321 | 265000 |
| | Description | |
| | Sausage warmer | |

| | | | |
|-----------------|-------------|-------------------|----------------------|
| Date | 06-09-2022 | Revision # | Revision version 1.1 |
| Revision | New design. | | |

