

Drawing



Tools for Chefs

Hendi B.V.
 Steenoven 21
 3911 TX Rhenen
 The Netherlands

Batch #

000000 until
 HK077119

Appliance part#

264119

Description

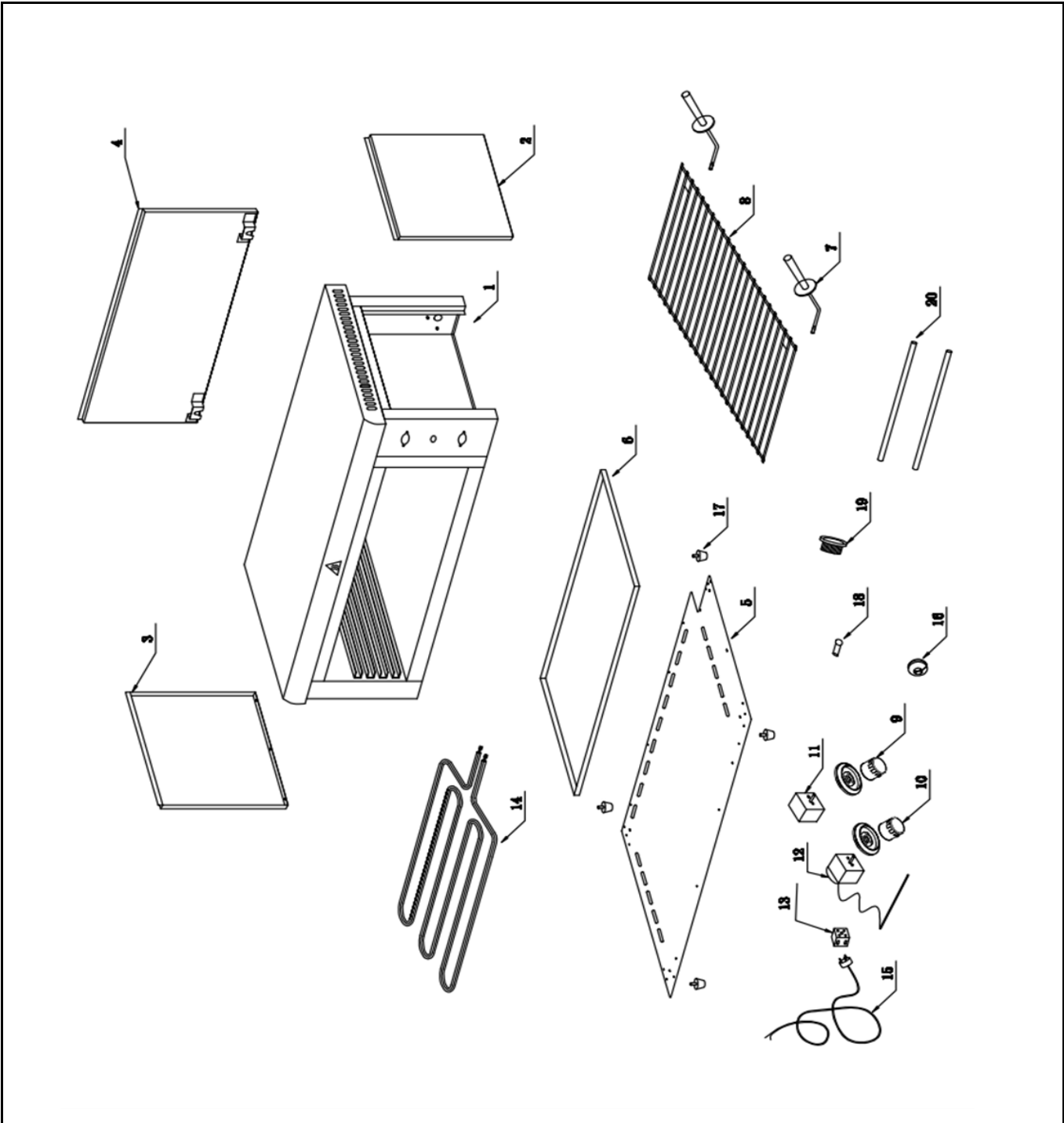
Salamander wall mountable

Date 04-05-2021


Revision #

1.0

Revision First Bill of Materials (BOM)



Bill of materials (BOM)

 <b style="font-size: 24px; margin-left: 10px;">HENDI Tools for Chefs Hendi B.V. Steenoven 21 3911 TX Rhenen The Netherlands	Batch #	Appliance part#
	000000 until HK077119	264119
	Description	
	Salamander wall mountable	

Date	04-05-2021	Revision #	1.0
Revision	First Bill of Materials (BOM)		

Item	Description	Part#	Quantity	Remark	Picture
1	Housing	n/a	1		
2	Right cover	n/a	1		
3	Left cover	n/a	1		
4	Back cover	n/a	1		
5	Bottom cover	n/a	1		
6	Crumb tray	904442	1		
7	Handle	943328	2		
8	Grid	904428	1	450x250mm	
9	Timer knob	n/a	1	Knob updated to new design (943335)	
10	Thermostat knob	n/a	1	Knob updated to new design (943342)	
11	Timer	943359	1		
12	Thermostat	943366	1		
13	Terminal	929940	1		
14	Element	901724	1		
15	Power cord	912027	1		
16	Grommet	n/a	1		
17	Feet	912058	4		
18	Indicator light	912003	1		
19	Cord inlet with retention	912201	1		
20	Tube	n/a	2		

n/a -> not available

nss -> not sold separately

Circuit diagram



HENDI

Tools for Chefs

Hendi B.V.

Steenoven 21
3911 TX Rhenen
The Netherlands

Batch #

000000 until
HK077119

Appliance part#

264119

Description

Salamander wall mountable

Date 04-05-2021

Revision # 1.0

Revision First Bill of Materials (BOM)

