

Drawing



HENDI

Tools for Chefs

Hendi B.V.

Steenoven 21
3911 TX Rhenen
The Netherlands

Batch #

662800 and up

Appliance part#

240502

Description

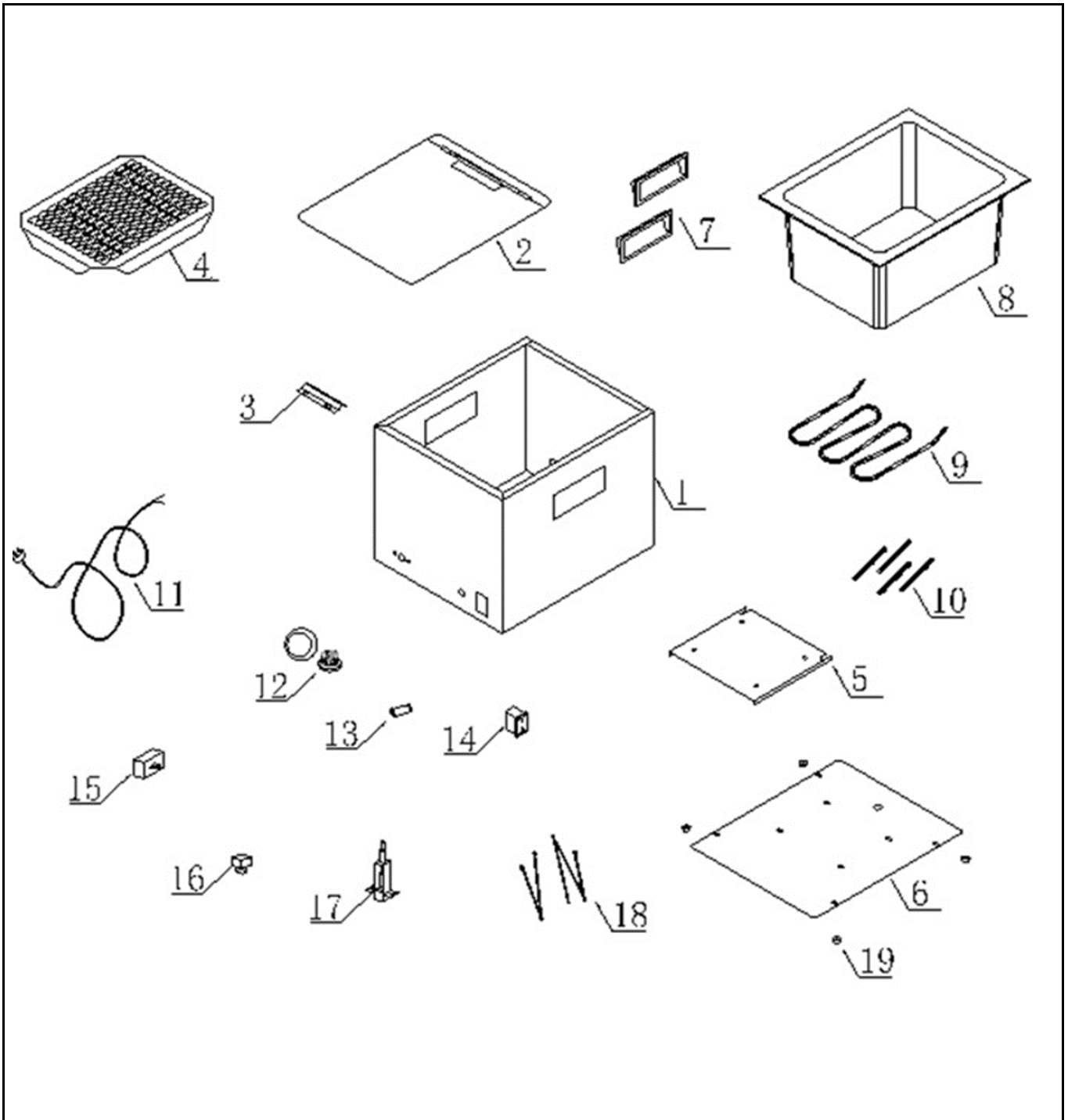
Sausage warmer 10L

Date 02-12-2021


Revision #

1.1

Revision New model.



Bill of materials (BOM)

 <b style="font-size: 24px; margin-left: 10px;">HENDI <small style="color: green; margin-left: 10px;">Tools for Chefs</small> Hendi B.V. Steenoven 21 3911 TX Rhenen The Netherlands	Batch #	Appliance part#
	662800 and up	240502
	Description	
Sausage warmer 10L		


Date	02-12-2021	Revision #	1.1
Revision	New model.		

Item	Description	Part#	Quantity	Remark	Picture
1	Housing	n/a	1		
2	Lid	n/a	1		
3	Probe holder	n/a	1		
4	Grid	944684	1		
5	Heat shield	n/a	1		
6	Bottom cover	n/a	1		
7	Handle bar	943618	2		
8	Container	n/a	1		
9	Element	928530	1		
10	Stud	n/a	4		
11	Power cord	943625	1		
12	Knob with goundplate	932377	1		
13	Indicator light	912003	1		
14	Switch	205426	1		
15	Thermostat	928561	1		
16	Hi-limiter	944677	1		
17	Reset bar	n/a	1		
18	Wiring	n/a	1		
19	Feet	928547	4		

n/a -> not available

nss -> not sold separately

Circuit diagram

 <b style="font-size: 24px; margin-left: 10px;">HENDI Tools for Chefs Hendi B.V. Steenoven 21 3911 TX Rhenen The Netherlands	Batch #	Appliance part#
	662800 and up	240502
	Description	
	Sausage warmer 10L	

Date	02-12-2021	Revision #	1.1
Revision	New model.		

