

Drawing



Tools for Chefs

Hendi B.V.

Innovatielaan 6
6745 XW De Klomp
The Netherlands

Batch #

000000 and up

Appliance part#

239889

Description

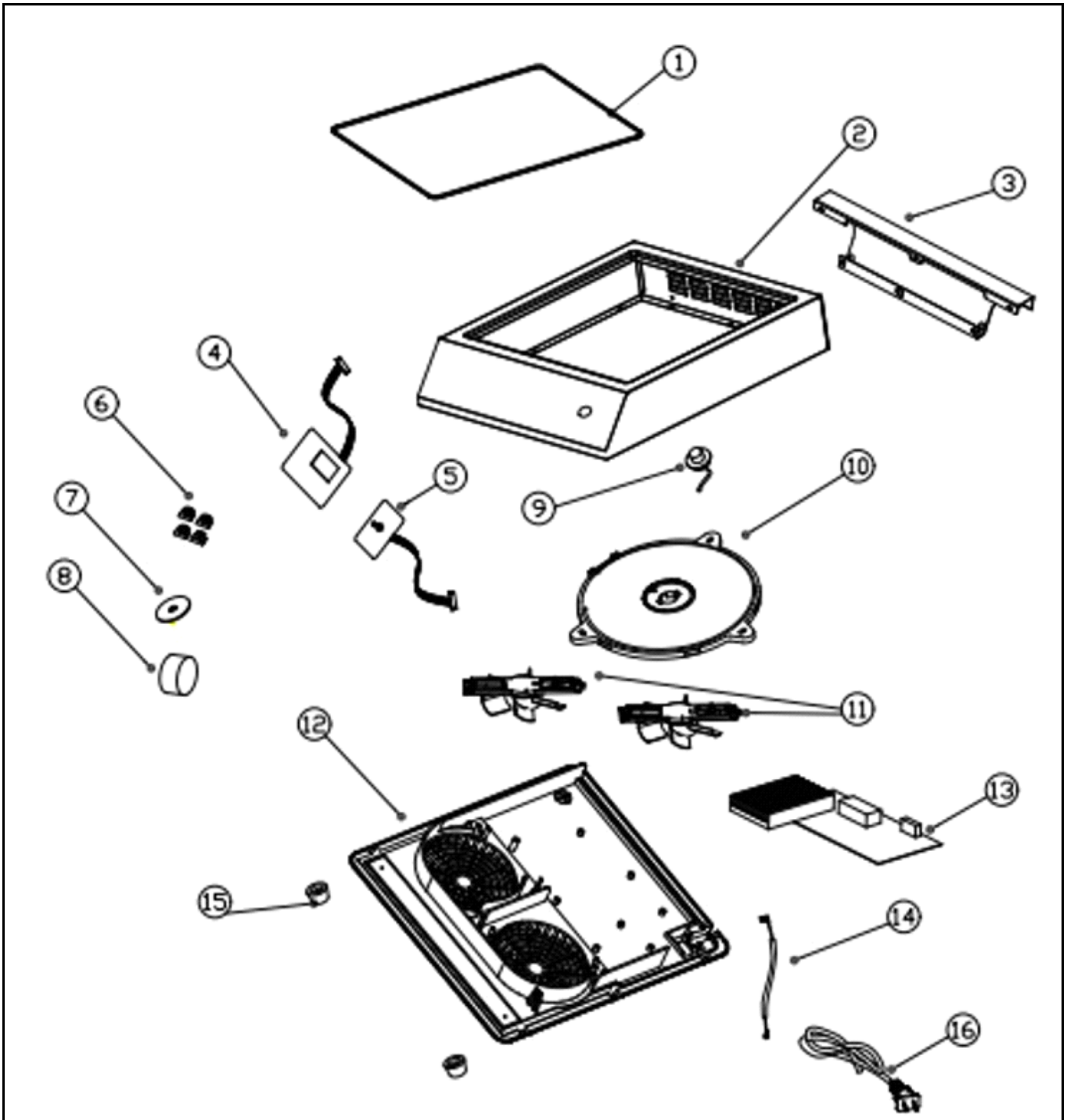
Induction cooker set 3500W

Date 09-01-2024


Revision #

V.01

Revision First Bill of Materials (BOM)



Bill of materials (BOM)

 <b style="font-size: 24px; margin-left: 10px;">HENDI <small style="color: green; margin-left: 10px;">Tools for Chefs</small> Hendi B.V. Innovatielaan 6 6745 XW De Klomp The Netherlands	Batch #	Appliance part#
	000000 and up	239889
	Description	
	Induction cooker set 3500W	


Date	09-01-2024	Revision #	V.01
Revision	First Bill of Materials (BOM)		

Item	Description	Part#	Quantity	Remark	Picture
1	Ceramic glass plate	nss	1	Available as 964361	
2	Upper housing	964361	1	Incl. item 1 and 3	
3	Upper housing bracket	nss	1	Available as 964361	
4	Display PCB	964392	1	Incl. item 5	
5	Potentiometer	nss	1	Available as 919484	
6	Control panel bracket	n/a	4		
7	Knob disc	n/a	1		
8	Knob	919453	1		
9	Coil sensor	944295	1		
10	Induction coil	964378	1		
11	Fan	919446	2		
12	Housing panel (bottom)	n/a	1		
13	Main PCB	964385	1		
14	Wire	n/a	1		
15	Foot	944301	4		
16	Power cord	929353	1		
*	Saucepan Ø16cm 1.5Ltr	838105	1	Not shown in drawing	
*	Fryingpan Ø28cm	838600	1	Not shown in drawing	

n/a -> not available

nss -> not sold separately

Wiring diagram

 <b style="font-size: 24px; font-weight: bold;">HENDI Tools for Chefs Hendi B.V. Innovatielaan 6 6745 XW De Klomp The Netherlands	Batch #	Appliance part#
	000000 and up	239889
	Description	
	Induction cooker set 3500W	

Date	09-01-2024	Revision #	V.01
Revision	First Bill of Materials (BOM)		

