

Drawing



Tools for Chefs

Hendi B.V.

Innovatielaan 6
6745XW De Klomp
The Netherlands

Batch #

000000 and up

Appliance part#

237397

Description

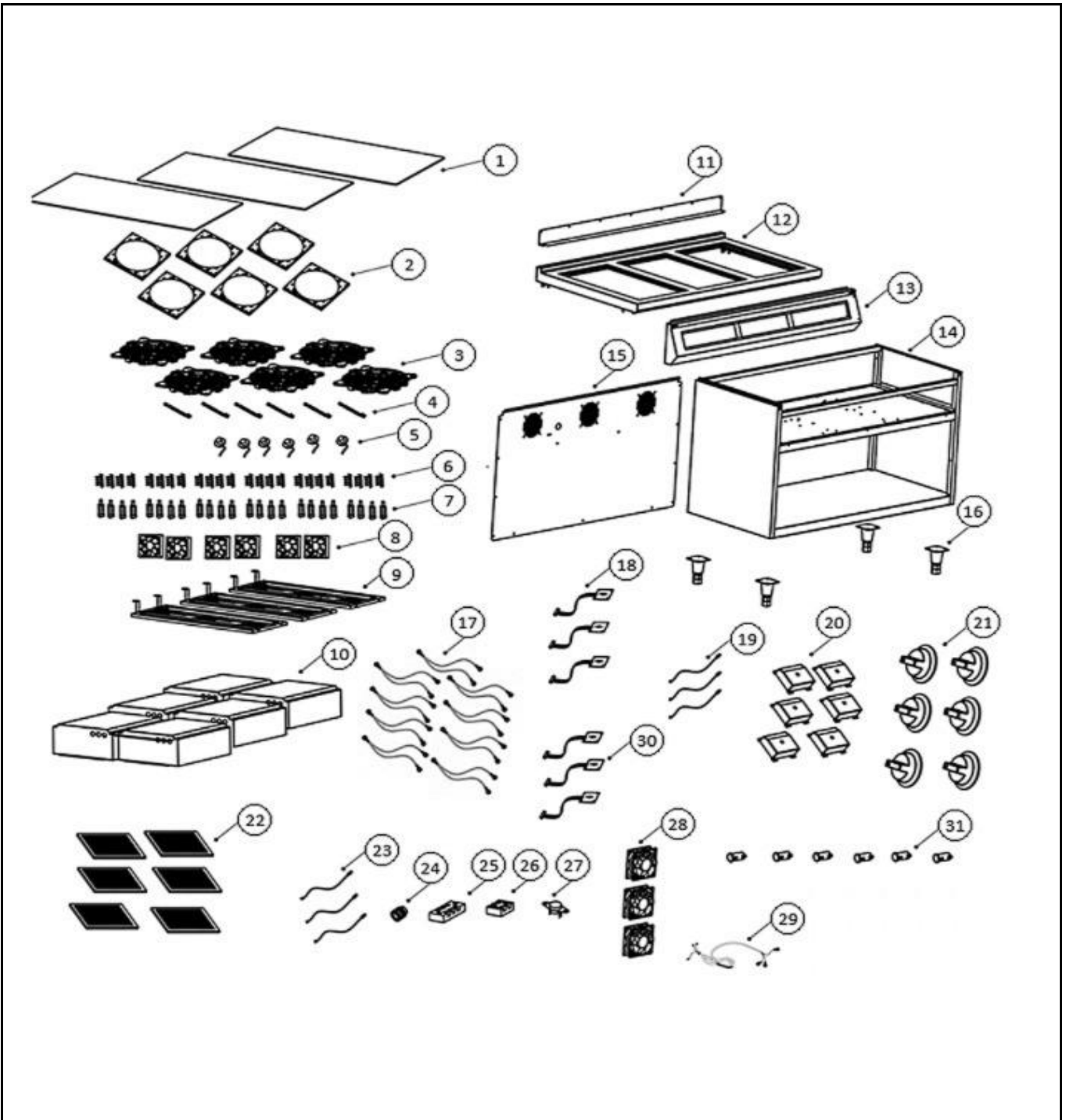
Induction stove with 6 hobs

Date 03-03-2026


Revision #

V.01

Revision First Bill of Materials (BOM)



Bill of materials (BOM)

 <b style="font-size: 24px; margin-left: 10px;">HENDI <small style="color: green; margin-left: 10px;">Tools for Chefs</small> Hendi B.V. Steenoven 21 3911 TX Rhenen The Netherlands	Batch #	Appliance part#
	000000 and up	237397
	Description	
	Induction stove with 6 hobs	


Date	03-03-2026	Revision #	V.01
Revision	First Bill of Materials (BOM)		

Item	Description	Part#	Quantity	Remark	Picture
1	Ceramic glass panel	nss	3		
2	Aluminum frame	n/a	6		
3	Induction coil	969861	6		
4	Coil sensor	n/a	6		
5	Main sensor	962084	6		
6	Induction coil spring	n/a	24		
7	Induction coil stand-off	n/a	24		
8	Fan	962107	6		
9	Induction coil bracket	n/a	3		
10	Main PCB (boxed)	962114	6		
11	Back cover (upper)	n/a	1		
12	Upper cover incl. glass	972359	1	Incl. item 1 and 11	
13	Control panel housing	n/a	1		
14	Housing frame	n/a	1		
15	Back cover (lower)	n/a	1		
16	Foot	n/a	1		
17	Main PCB cable harness	n/a	1		
18	Control panel (5kW)	962121	3		
19	Data cable (800mm)	n/a	3		
20	Control panel box	n/a	6		
21	Knob	962152	6		
22	Intake filter	n/a	6		
23	Data cable (1200mm)	n/a	3		
24	Power cord retention	n/a	1		
25	3 Pole connector board	n/a	1		
26	2 Pole connector board	n/a	1		
27	Hi-limiter	962176	1		
28	Fan	962169	3		
29	Power cord	n/a	1		
30	Control panel (3.5kW)	962138	3		
31	Indicator light	962145	6		

n/a -> not available

nss -> not sold separately

Dimentional drawing

 HENDI Tools for Chefs Hendi B.V. Steenoven 21 3911 TX Rhenen The Netherlands	Batch #	Appliance part#
	000000 and up	237397
	Description	
	Induction stove with 6 hobs	

Date	03-03-2026	Revision #	V.01
Revision	First Bill of Materials (BOM)		

