

Drawing



**Hendi B.V.**  
 Steenoven 21  
 3911 TX Rhenen  
 The Netherlands

Batch #

V.02

Appliance part#

233931

Description

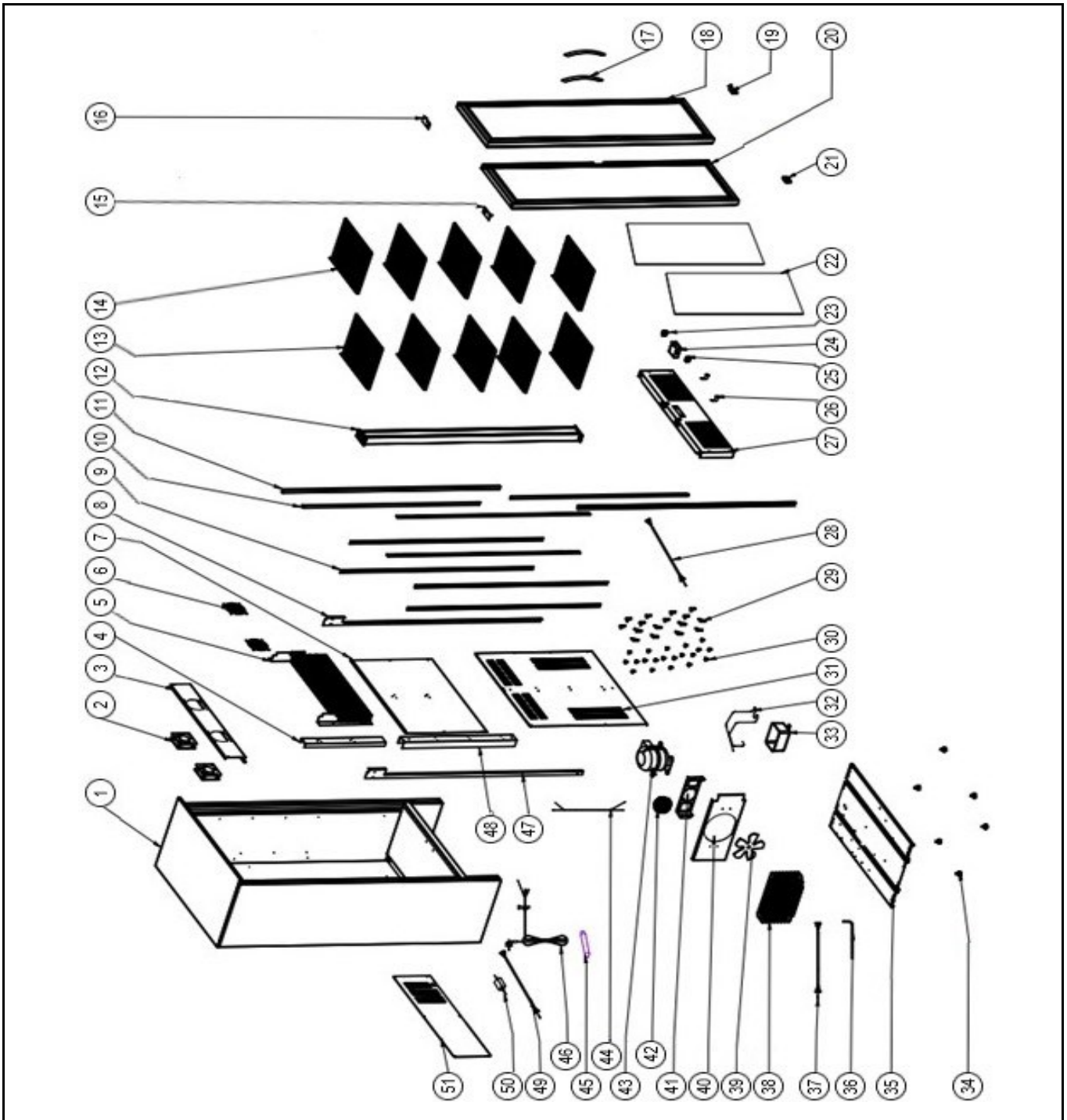
Back bar refrigerator double doors

Date 21-06-2023


Revision #

V.02

Revision New model.



### Bill of materials (BOM)

 <b style="font-size: 24px; margin-left: 10px;">HENDI</b> <span style="font-size: 12px; color: green; margin-left: 10px;">Tools for Chefs</span> <b>Hendi B.V.</b> Steenoven 21 3911 TX Rhenen The Netherlands	<b>Batch #</b>	<b>Appliance part#</b>
	V.02	<b>233931</b>
	<b>Description</b>	
	<b>Back bar refrigerator double doors</b>	


<b>Date</b>	21-06-2023	<b>Revision #</b>	V.02
<b>Revision</b>	New model.		

Item	Description	Part#	Quantity	Remark	Picture
1	Cabinet	n/a	1		
2	Evaporator fan	962732	2		
3	Epaorator fan bracket	n/a	1		
4	Evaporator bracket	n/a	1		
5	Evaporator	n/a	1		
6	Evaporator fan guard	n/a	2		
7	Deflector board (upper)	n/a	1		
8	Deflector board bracket (right)	n/a	1		
9	Shelf holder bracket	n/a	6		
10	LED light	n/a	2		
11	LED light cover	n/a	2		
12	Center housing column	n/a	1		
13	Shelf (left)	963715	5		
14	Shelf (right)	963722	5		
15	Door hinge (upper left)	963739	1		
16	Door hinge (upper right)	963746	1		
17	Door handle	963753	2		
18	Door assembly (right)	963760	1	Incl. item 17, 18 and 22	
19	Door hinge (lower right)	963777	1		
20	Door assembly (left)	963784	1	Incl. item 17, 20 and 22	
21	Door hinge (lower left)	963791	1		
22	Door gasket	963807	2		
23	Switch (lights)	962794	1		
24	Digital controller	962770	1		
25	Switch (on/off)	962725	1		
26	Door lock	963814	2		
27	Lower front panel	n/a	1		
28	Wire harness (digital controller)	n/a	1		
29	Shelf holder (A)	962817	20	Set of 4pcs	
30	Shelf clip	963821	20	Set of 4pcs	
31	Deflector board (lower)	n/a	1		
32	Coolant exhaust	n/a	1		
33	Drain pan	n/a	1		
34	Feet	962800	6	Sold as set of 4 pcs	
35	Mounting bracket	n/a	1		
36	Condenser outlet pipe	n/a	1		
37	Wire harness (condenser fan)	n/a	1		
38	Condenser	n/a	1		
39	Fan blade	nss	1	Available as 963838	
40	Condenser fan cover	n/a	1		
41	Condenser fan bracket	nss	1	Available as 963838	
42	Condenser fan motor	963838	1	Incl. item 39, 41 and 42	
43	Compressor (PA65HHA)	963845	1		
44	Coolant return pipe	n/a	1		
45	Dyer filter	n/a	1		
46	Power cord	n/a	1		
47	Deflector board bracket (left)	n/a	1		
48	Deflector board bracket (middle)	n/a	1		
49	Temperature sensor	963852	1		
50	Power supply 12V	963869	1		
51	Housing panel (lower back)	n/a	1		

n/a -> not available

nss

### Circuit diagram

 <b style="font-size: 24px; margin-left: 10px;">HENDI</b> <span style="font-size: 12px; color: #808000; margin-left: 10px;">Tools for Chefs</span> <b>Hendi B.V.</b> Steenoven 21 3911 TX Rhenen The Netherlands	<b>Batch #</b>	<b>Appliance part#</b>
	V.02	<b>233931</b>
	<b>Description</b>	
	<b>Back bar refrigerator double doors</b>	

<b>Date</b>	21-06-2023	<b>Revision #</b>	V.02
<b>Revision</b>	New model.		

