

Drawing



HENDI

Tools for Chefs

Hendi B.V.

Steenoven 21
3911 TX Rhenen
The Netherlands

Batch #

000000 until
HK082521

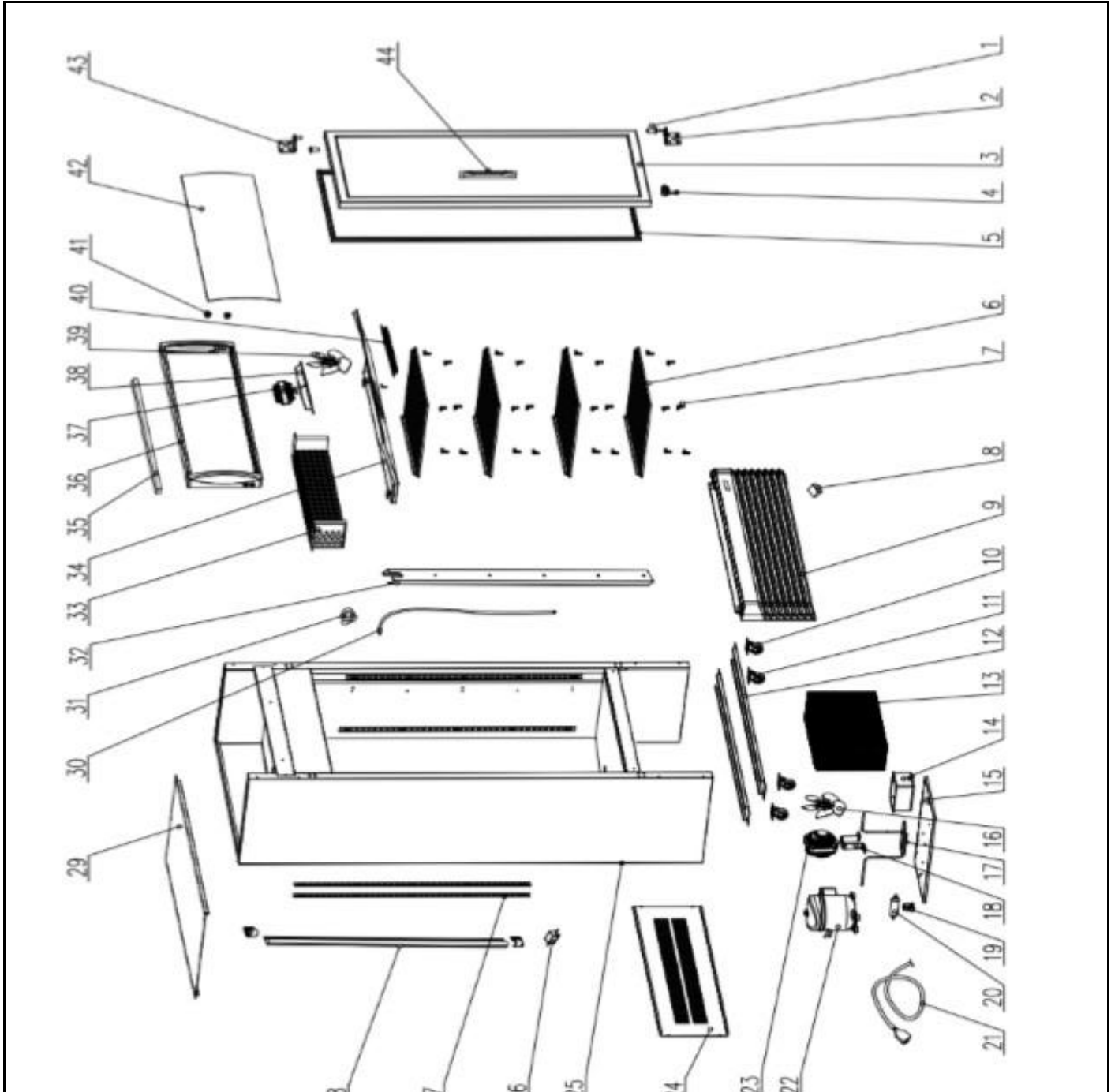
Appliance part#

233788

Description


Display refrigerator single door 360L

Date	27-11-2024	Revision #	1.0
Revision	First Bill of Materials (BOM)		



21 2 2 1 2 1 1

Bill of materials (BOM)

 <b style="font-size: 2em; margin-left: 10px;">HENDI <small style="color: green; font-weight: normal;">Tools for Chefs</small> Hendi B.V. Steenoven 21 3911 TX Rhenen The Netherlands	Batch #	Appliance part#
	000000 until HK082521	233788
	Description	
	Display refrigerator single door 360L	

Date	27-11-2024	Revision #	1.0
Revision	First Bill of Materials (BOM)		

Item	Description	Part#	Quantity	Remark	Picture
1	Hinge sleeve	nss	2	Available as 954447 and 954454	
2	Door hinge (bottom)	954447	1		
3	Door assembly	954461	1		
4	Door lock	954560	1		
5	Door gasket	954478	1		
6	Shelf	952276	4		
7	Shelf clip	975060	16		
8	Digital controller	954485	1		
9	Front panel	n/a	1		
10	Wheel (front)	954492	2		
11	Wheel (back)	954508	2		
12	Wheel bracket	n/a	2		
13	Condensor	n/a	1		
14	Water tray	n/a	1		
15	Compressor bracket	n/a	1		
16	Fan blade	nss	1	Available as 953860	
17	Coolant tube	n/a	1		
18	Condensor fan motor support	nss	1	Available as 953860	
19	Bracket	n/a	1		
20	Dryer filter	n/a	1		
21	LED cable	n/a	1		
22	Compressor	n/a	1		
23	Condensor fan	953860	1	Incl. item 16 and 18	
24	Housing panel (back)	n/a	1		
25	Housing	n/a	1		
26	LED driver	971246	2		
27	Shelf holder bracket	n/a	4		
28	LED light (interior)	954522	2		
29	Housing panel (top)	n/a	1		
30	Drainage tube	n/a	1		
31	Water drain	n/a	1		
32	Bracket	n/a	1		
33	Evaporator	n/a	1		
34	Evaporator cover	n/a	1		
35	LED light (display)	954539	1		
36	Display frame	n/a	1		
37	Evaporator fan	954546	1		
38	Evaporator fan bracket	n/a	1		
39	Fan blade	n/a	1		
40	Fan cover	n/a	1		
41	Switch (interior and display light)	954553	2		
42	Display panel	n/a	1		
43	Door hinge (top)	954454	1		
44	Door handle		1		

n/a -> not available

nss -> not sold separately