

Drawing



Tools for Chefs

Hendi B.V.

Steenoven 21  
3911 TX Rhenen  
The Netherlands

Batch #

181921 and up

Appliance part#

232880

Description

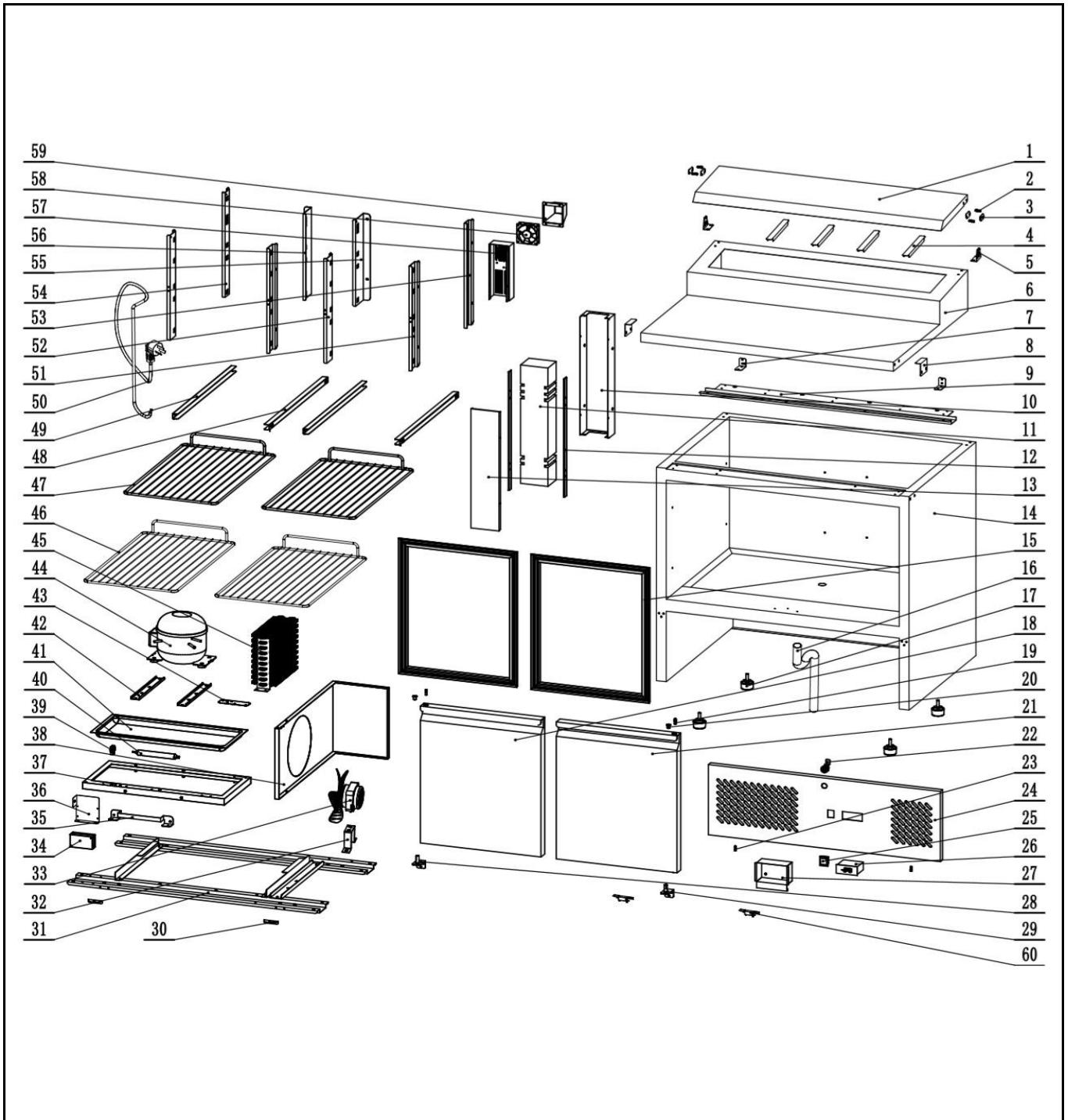
Two door salad counter with raised GN display  
300L

Date 19-08-2020


Revision #

1.0

Revision First Bill of Materials (BOM)



## Bill of materials (BOM)

 <b style="font-size: 24pt; font-weight: bold;">HENDI</b> <small>Tools for Chefs</small> <b>Hendi B.V.</b> Steenoven 21 3911 TX Rhenen The Netherlands	<b>Batch #</b>	<b>Appliance part#</b>
	181921and up	232880
	<b>Description</b>	
	Two door salad counter with raised GN display 300L	

<b>Date</b>	19-08-2020	<b>Revision #</b>	1.0
<b>Revision</b>	First Bill of Materials (BOM)		


Item	Description	Part#	Quantity	Remark	Picture
1	Lid	n/a	1		
2	Hinge axis	n/a	4		
3	Support plate	n/a	4		
4	Adapter bar	956588	4		
5	Hinge	n/a	2		
6	Top cover	n/a	1		
7	Top cover bracket (back)	n/a	2		
8	Top cover bracket (front)	n/a	2		
9	Bracket	n/a	1		
10	Bracket cover	n/a	1		
11	Housing pilar	n/a	1		
12	Plastic cover	n/a	2		
13	Housing pilar cover	n/a	1		
14	Frame	n/a	1		
15	Door gasket	956359	2		
16	Drain pipe	n/a	1		
17	Feet	931523	4		
18	Door assembly (left)	n/a	1		
19	Door hinge (top)	n/a	2		
20	Door hinge sleeve (top)	n/a	2		
21	Door assembly (right)	n/a	1		
22	Lock	n/a	1		
23	Front panel bracket	n/a	2		
24	Front panel	n/a	1		
25	Switch	205426	1		
26	Digital controller	956366	1		
27	Digital controller cover	n/a	1		
28	Door hinge (bottom-left)	956373	1		
29	Door hinge (bottom-right)	956380	1		
30	Front panel bracket	n/a	2		
31	Frame bracket	n/a	1		
32	Condensor fan bracket	n/a	1		
33	Condensor fan	956397	1		
34	PCB housing	n/a	1		
35	Bracket	n/a	1		
36	PCB housing bracket	n/a	1		
37	Water tray frame	n/a	1		
38	Airflow bracket	n/a	1		
39	Dryer filter holder	n/a	1		
40	Dryer filter holder	n/a	1		
41	Water tray	n/a	1		
42	Compressor bracket	n/a	2		
43	Bracket	n/a	1		
44	Compressor (HYE125MHU)	950784	1		
45	Condensor	n/a	1		
46	Shelf	n/a	0		
47	Shelf	956403	2		
48	Shelf holder (right)	nss	2		
49	Shelf holder (left)	nss	2		
*	Shelf holder set (left/right)	956410	2	Incl. item 48 and 49	
50	Power cord	931554	1		
51	Shelf holder bracket (front-right)	n/a	2		
52	Shelf holder bracket (front-left)	n/a	2		
53	Shelf holder bracket (back-right)	n/a	1		

54	Shelf holder bracket (back-left)	n/a	1		
55	Shelf holder bracket (mid-back, right)	n/a	1		
56	Shelf holder bracket (mid-back, left)	n/a	1		
57	Fan bracket	n/a	1		
58	Fan motor (evaporator)	956427	1		
59	Fan exhaust	n/a	1		
60	Door magnet	n/a	2		

n/a -> not available

nss -> not sold separately

### Circuit diagram

 <b style="font-size: 24px; margin-left: 10px;">HENDI</b> <span style="color: #92D050; font-size: 12px; margin-left: 10px;">Tools for Chefs</span> <b>Hendi B.V.</b> Steenoven 21 3911 TX Rhenen The Netherlands	<b>Batch #</b>	<b>Appliance part#</b>
	181921 and up	<b>232880</b>
	<b>Description</b>	
	Two door salad counter with raised GN display 300L	

<b>Date</b>	19-08-2020	<b>Revision #</b>	1.0
<b>Revision</b>	First Bill of Materials (BOM)		

