

Drawing



**Hendi B.V.**  
 Steenoven 21  
 3911 TX Rhenen  
 The Netherlands

Batch #

301418 until  
 190030

Appliance part#

**232804**

Description

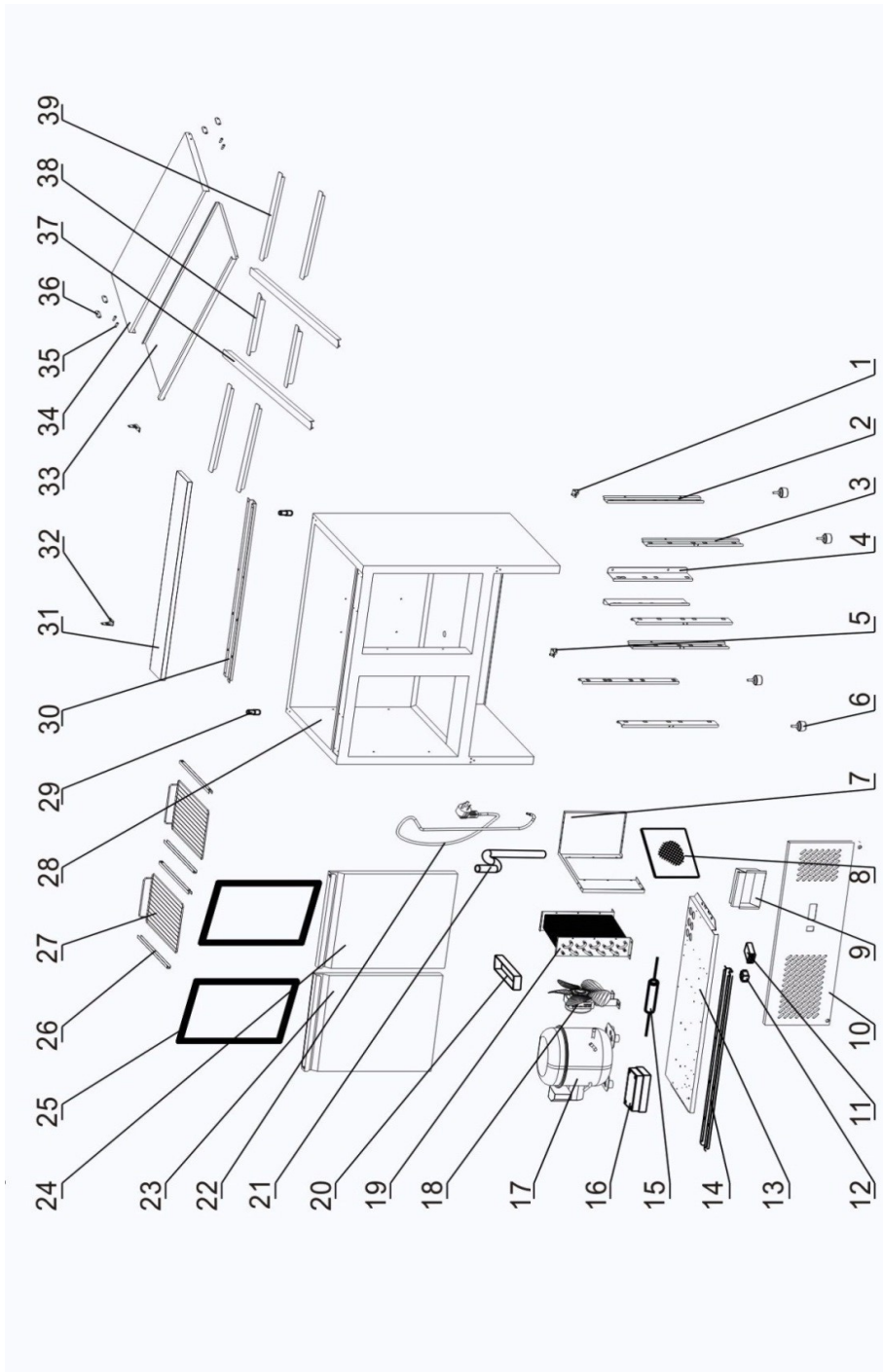
**Salad counter**

Date 21-06-2021


Revision #

1.0

Revision First bill of materials (BOM)



### Bill of materials (BOM)

 <b>HENDI</b> <small>FOOD SERVICE EQUIPMENT</small> <b>Hendi B.V.</b> Steenoven 21 3911 TX Rhenen The Netherlands	<b>Batch #</b>	<b>Appliance part#</b>
	301418 until 190030	<b>232804</b>
	<b>Description</b>	
<b>Salad counter</b>		


<b>Date</b>	21-06-2021	<b>Revision #</b>	1.0
<b>Revision</b>	First bill of materials (BOM)		

Item	Description	Part#	Quantity	Remark	Picture
1	Bottom hinge (right)	931738	1		
2	Right holder	n/a	2		
3	Front holder	n/a	4		
4	Rear middle holder	n/a	2		
5	Bottom hinge (left)	931745	1		
6	Feet	931523	4		
7	Air duct board	n/a	1		
8	Condenser filter	931752	1		
9	Electric box cover	n/a	1		
10	Front panel	931769	1		
11	Digital controller	931530	1		
12	Switch	931547	1		
13	Bottom cover	n/a	1		
14	Bracket	n/a	1		
15	Drying filter	n/a	1		
16	Junction box	n/a	1		
17	Compressor	n/a	1		
18	Fan	931776	1		
19	Condenser	n/a	1		
20	Drain pan	n/a	1		
21	Drain pipe	916094	1		
22	Power cord	931554	1		
23	Left door	931790	1		
24	Right door	931806	1		
25	Door seal	931813	2		
26	Holder	931820	4		
27	Shelf	931561	2		
28	Frame	n/a	1		
29	Upper axis	931837	2		
30	Bracket	n/a	1		
31	Nylon cutting board	916056	1		
32	Hinge lid	931844	2		
33	Lower lid	nss	1		
34	Lid complete	931851	1	Incl item 33;35;36	
35	Hinge pin	931868	4	Also in 931851	
36	Axis inner lining	nss	2	Also in 931851	
37	Adaptor bar long	931578	2		
38	Adaptor bar short	931585	2		
39	Adaptor bar medium	931592	4		

n/a -> not available

nss -> not sold separately

### Circuit diagram

 <p><b>Hendi B.V.</b> Steenoven 21 3911 TX Rhenen The Netherlands</p>	<b>Batch #</b>	<b>Appliance part#</b>
	301418 until 190030	<b>232804</b>
	<b>Description</b>	
	Salad counter	

<b>Date</b>	21-06-2021	<b>Revision #</b>	1.0
<b>Revision</b>	First bill of materials (BOM)		

## Circuit diagram

