
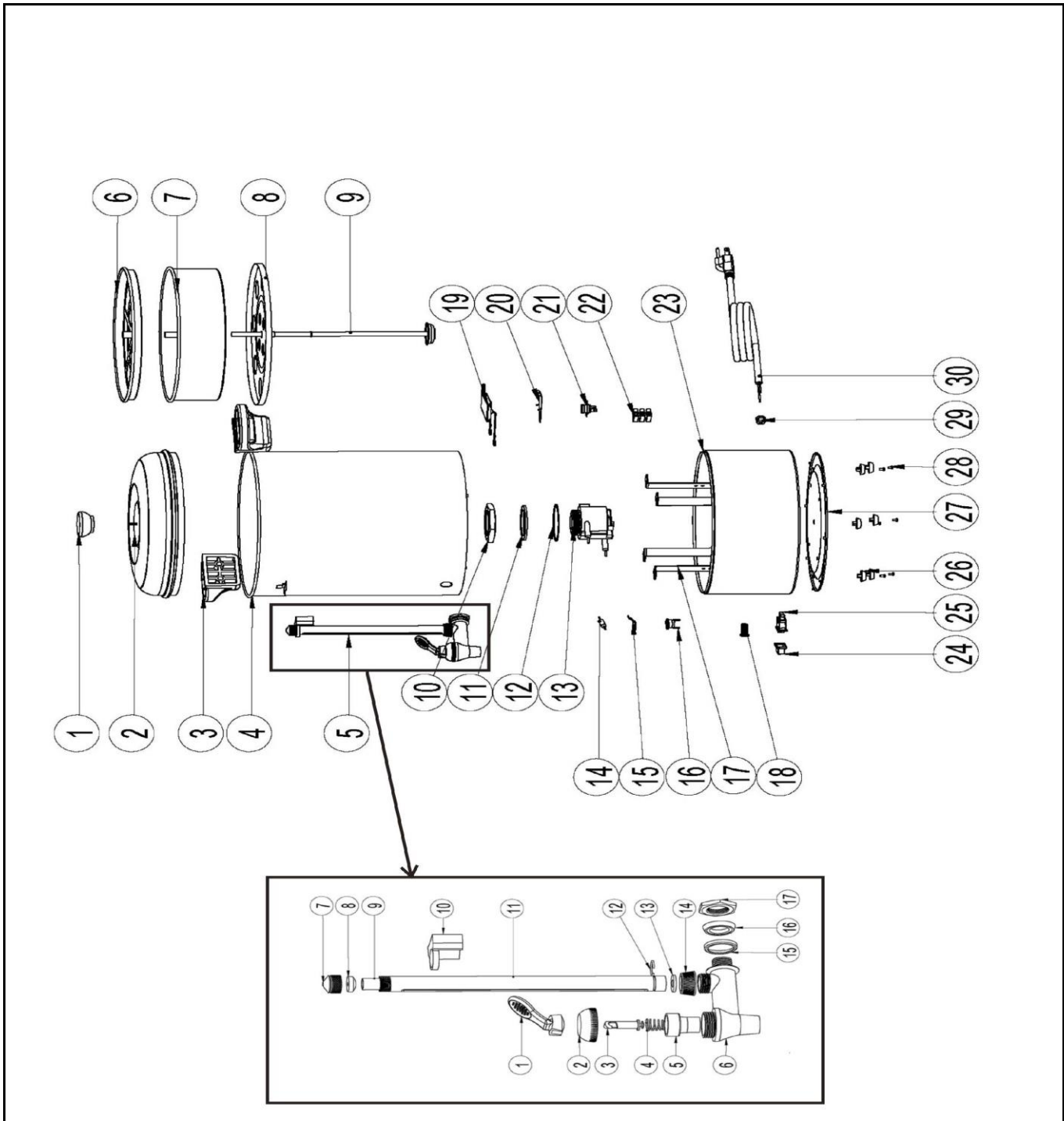



Drawing

| | | |
|--|-----------------------|-----------------|
|  HENDI FOOD SERVICE EQUIPMENT Hendi B.V. Steenoven 21 3911 TX Rhenen The Netherlands | Batch # | Appliance part# |
| | 000000 until 101923 | 208205 |
| | Description | |
| | Percolator 15L | |

| | | | |
|----------|-------------------------------|------------|------------------|
| Date | 31-01-2017 | Revision # | Revision version |
| Revision | First bill of materials (BOM) | | |



Bill of materials (BOM)

| | | |
|---|-----------------------|------------------------|
|  Hendi B.V. Steenoven 21 3911 TX Rhenen The Netherlands | Batch # | Appliance part# |
| | 000000 until 101923 | 208205 |
| | Description | |
| | Percolator 15L | |


| | | | |
|-----------------|-------------------------------|-------------------|------------------|
| Date | 31-01-2017 | Revision # | Revision version |
| Revision | First bill of materials (BOM) | | |

| Item | Description | Part# | Quantity | Remark | Picture |
|------|--------------------------------|--------|----------|------------------------------------|---------|
| 1 | Knob | nss | 1 | Available as 901236 | |
| 2 | Lid | 901236 | 1 | | |
| 3 | Handle | 926239 | 2 | | |
| 4 | Container | n/a | 1 | | |
| 5 | Graduation complete set | 900260 | 1 | (item 5-1 to 5-17) | |
| 5-1 | Lever | nss | 1 | Available in set 208038 and 900260 | |
| 5-2 | Nut | nss | 1 | Available in set 208038 and 900260 | |
| 5-3 | Axle | nss | 1 | Available in set 208038 and 900260 | |
| 5-4 | Spring | nss | 1 | Available in set 208038 and 900260 | |
| 5-5 | Silicone gasket | nss | 1 | Available in set 208038 and 900260 | |
| 5-6 | Faucet | 208038 | 1 | Also available in set 900260 | |
| 5-7 | Nut | nss | 1 | Available in set 900260 | |
| 5-8 | Gasket (graduation glass) | 208496 | 1 | Also available in set 900260 | |
| 5-9 | Graduation glass | 900598 | 1 | Also available in set 900260 | |
| 5-10 | Holder (pipe graduation glass) | nss | 1 | Available in set 900260 | |
| 5-11 | Pipe graduation glass | nss | 1 | Available in set 900260 | |
| 5-12 | Ring | nss | 1 | Available in set 900260 | |
| 5-13 | Gasket (graduation glass) | 208496 | 1 | Also available in set 900260 | |
| 5-14 | Nut | nss | 1 | Available in set 208038 and 900260 | |
| 5-15 | Plastic ring | nss | 1 | Available in set 208038 and 900260 | |
| 5-16 | Gasket | nss | 1 | Available in set 208038 and 900260 | |
| 5-17 | Nut | nss | 1 | Available in set 208038 and 900260 | |
| 6 | Filter cover | nss | 1 | Available as 900291 | |
| 7 | Filter basket | 900291 | 1 | | |
| 8 | Tray | 910818 | 1 | | |
| 9 | Pumpbar | 900550 | 1 | | |
| 10 | Nut element | nss | 1 | Available as 900116 | |
| 11 | Gasket element | nss | 1 | Available as 900116 | |
| 12 | Washer element | nss | 1 | Available as 900116 | |
| 13 | Element 1500W | 900116 | 1 | | |
| 14 | Thermal fuse | 900345 | 1 | | |
| 15 | Holder (thermal fuse) | n/a | 1 | | |
| 16 | Clixon (88 degrees celc.) | 900147 | 1 | | |
| 17 | Holder bottom cover | n/a | 1 | | |
| 18 | Indication light | 902059 | 1 | | |
| 19 | Element 80W | 904268 | 2 | | |
| 20 | Holder element | n/a | 2 | | |
| 21 | Clixon (200 degrees celc.) | 900277 | 1 | | |
| 22 | Terminal block | 926246 | 1 | | |
| 23 | Lower base | n/a | 1 | | |
| 24 | Cover switch | 900581 | 1 | | |
| 25 | Switch | 900123 | 1 | | |
| 26 | Feet | 900574 | 4 | Sold per pcs | |
| 27 | Bottom cover | n/a | 1 | | |
| 28 | Pin feet | nss | 4 | Available as 900574 | |
| 29 | Cord retention | 904374 | 1 | | |
| 30 | Powercord (H05RN-F 3Gx1,5mm) | 930045 | 1 | | |

n/a -> not available

nss -> not sold separately

Circuit diagram

| | | |
|--|-----------------------|------------------------|
|  <b style="font-size: 24px; color: red; margin-left: 10px;">HENDI <small style="color: red; margin-left: 10px;">FOOD SERVICE EQUIPMENT</small> Hendi B.V. Steenoven 21 3911 TX Rhenen The Netherlands | Batch # | Appliance part# |
| | 000000 until 101923 | 208205 |
| | Description | |
| | Percolator 15L | |

| | | | |
|-----------------|-------------------------------|-------------------|------------------|
| Date | 31-01-2017 | Revision # | Revision version |
| Revision | First bill of materials (BOM) | | |

