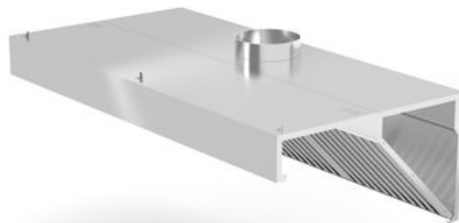


Wall-mounted extractor hood

229286

Made of durable stainless steel (AISI 430). Equipped with a set of stainless steel labyrinth filters which can be washed in dishwashers. With collection pan for catching fat and grime that comes from the filters. Fitted with an $\varnothing 200$ mm ventilation connection at the top. The hood isn't equipped with a fan, this needs to be done separately.



Specifications

Materials	: Stainless steel
Packed per	: 1
Length (mm)	: 1000
Width (mm)	: 700
Height (mm)	: 450
Weight of item (kg)	: 32
Measurements	: 1000x700x(H)450

Transport specifications

EAN	: 8711369229286
Intrastat code	: 0
Gross weight (kg)	: 22.09
Net weight (kg)	: 22.04
Sales units per pallet	: 4
Plastic packaging (gram)	: 50

HENDI B.V.

Innovatielaan 6
6745 XW De Klomp, The Netherlands
T: +31 (0)317 681 040
E: info@hendi.eu

HENDI Polska Sp. z o.o.

ul. Firmowa 12
62-023 Robakowo, Poland
T: +48 61 6587000
E: info@hendi.pl

HENDI GmbH

Ehring 15
5112 Lamprechtshausen, Austria
T: +43 (0) 6274 200 10 0
E: office.austria@hendi.eu

HENDI S.R.L.

Str. 13 decembrie 94A, Hala 14
Braşov, 500164, Romania
T: +40 268 320330
E: office@hendi.ro

PKS HENDI South East Europe SA

5 Metsovou Str.
18346 Moschato, Athens, Greece
T: +30 210 4839700
E: info@pks-hendi.com

HENDI Italia S.R.L.

Via Leonardo da Vinci 4
39100 Bolzano (BZ), Italy
T: 800 727 438
E: office.italy@hendi.eu