
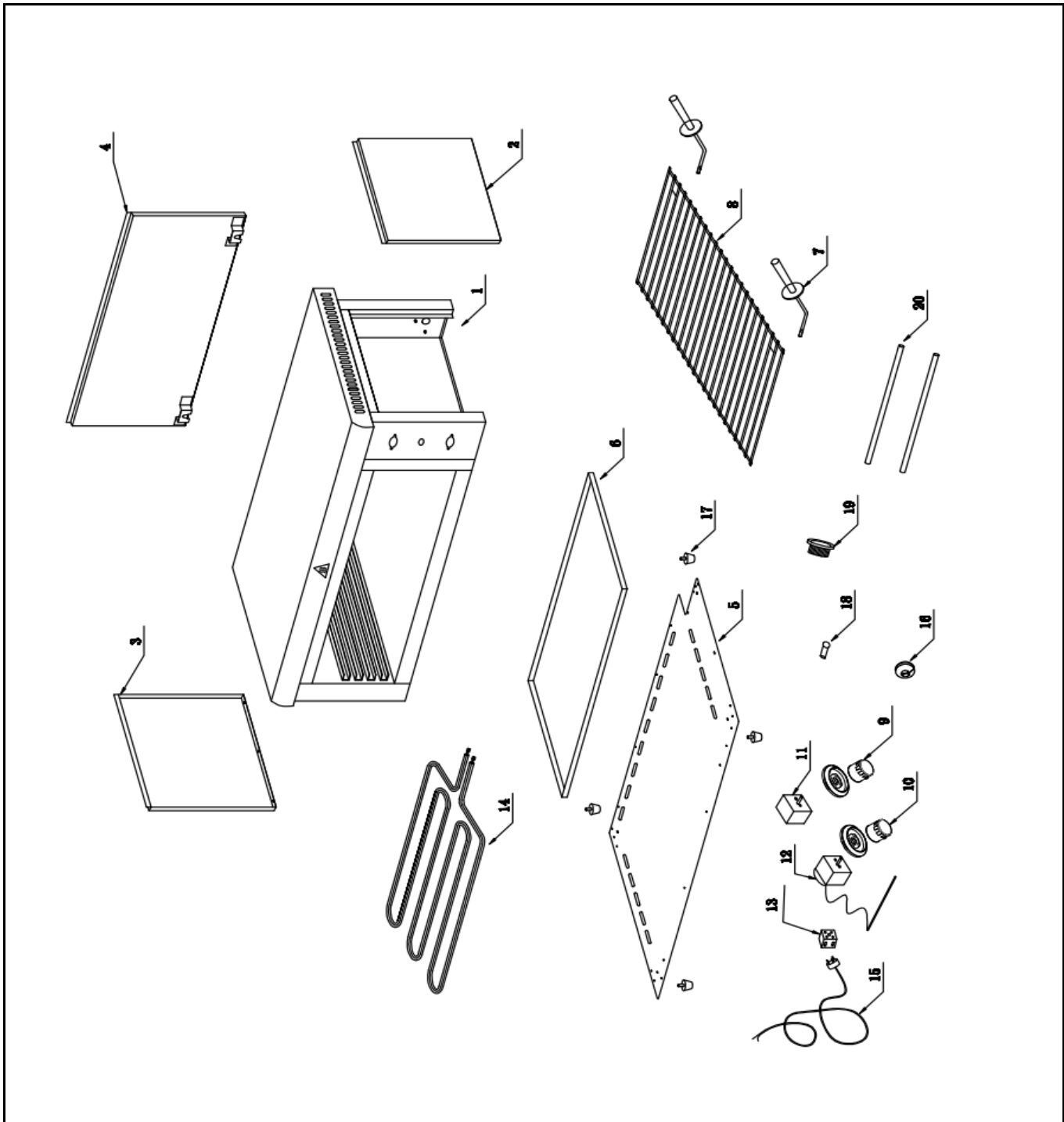



Drawing

 <p>Hendi B.V. Steenoven 21 3911 TX Rhenen The Netherlands</p>	Batch #	Appliance part#
	660876 and up	264119
	Description	
	Salamander wall mountable	

Date	14-01-2020	Revision #	Revision version
Revision	First bill of materials (BOM)		



Bill of materials (BOM)

 <p>HENDI FOOD SERVICE EQUIPMENT</p> <p>Hendi B.V. Steenoven 21 3911 TX Rhenen The Netherlands</p>	Batch #	Appliance part#
	660876 and up	264119
	Description	
	Salamander wall mountable	


Date	14-01-2020	Revision #	Revision version
Revision	First bill of materials (BOM)		

Item	Description	Part#	Quantity	Remark	Picture
1	Housing	n/a	1		
2	Right cover	n/a	1		
3	Left cover	n/a	1		
4	Back cover	n/a	1		
5	Bottom cover	n/a	1		
6	Crumb tray	904442	1		
7	Handle	943328	2		
8	Grid	904428	1	450x250mm	
9	Timer knob	943335	1		
10	Thermostat knob	943342	1		
11	Timer	943359	1		
12	Thermostat	943366	1		
13	Terminal	929940	1		
14	Element	901724	1		
15	Power cord	912027	1		
16	Grommet	n/a	1		
17	Feet	912058	4		
18	Indicator light	912003	1		
19	Cord inlet with retention	912201	1		
20	Tube	n/a	2		

n/a -> not available

nss -> not sold separately

Circuit diagram

 Hendi B.V. Steenoven 21 3911 TX Rhenen The Netherlands	Batch #	Appliance part#
	660876 and up	264119
	Description	
	Salamander wall mountable	

Date	14-01-2020	Revision #	Revision version
Revision	First bill of materials (BOM)		

