
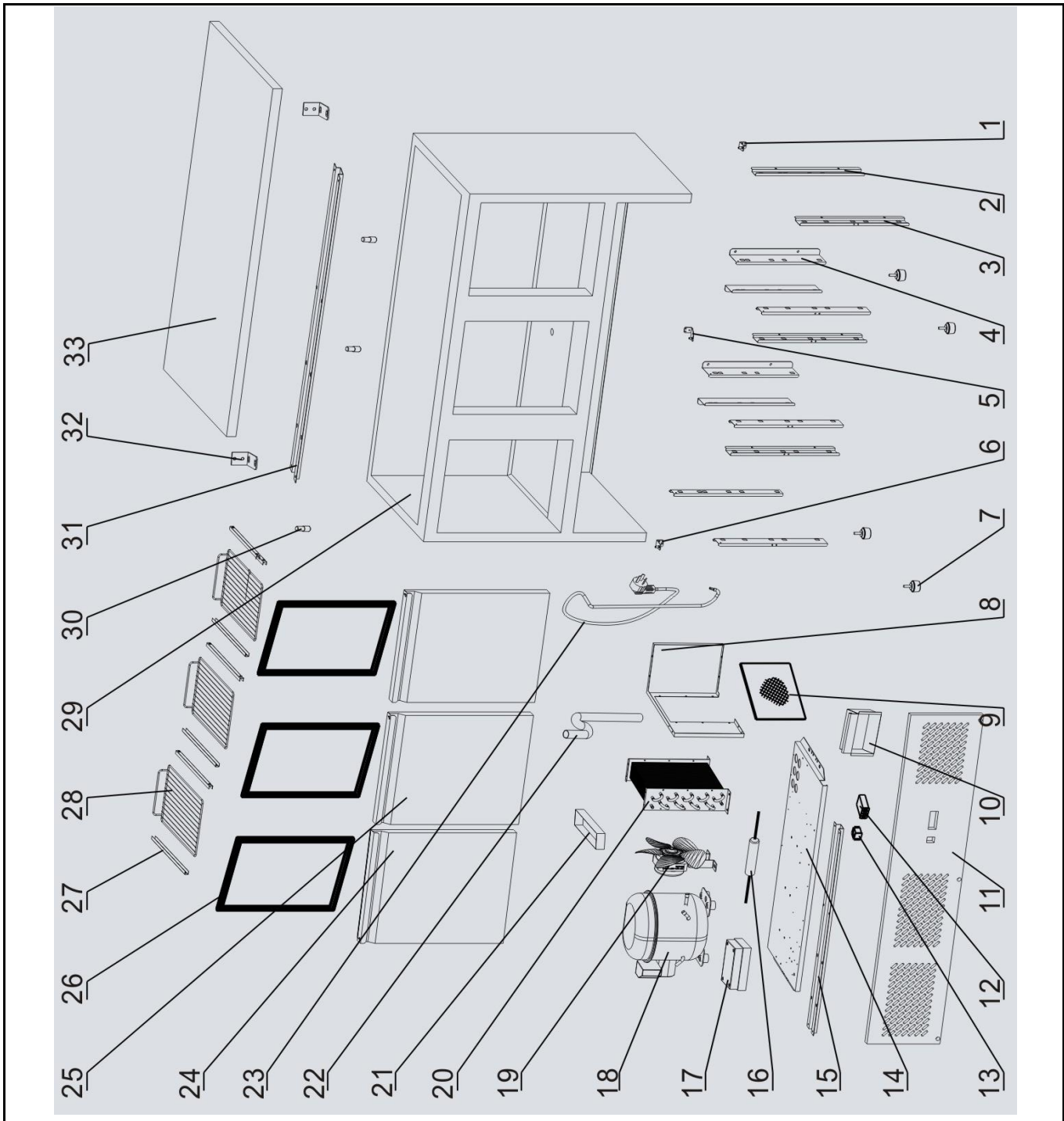



Drawing

 <p><b>Hendi B.V.</b> Steenoven 21 3911 TX Rhenen The Netherlands</p>	Batch #	Appliance part#
	660729 and up	232026
	Description	
	Refrigerator counter with three doors Kitchen line	

Date	27-09-2016	Revision #	Revision version
Revision	First bill of materials (BOM)		



### Bill of materials (BOM)

 <b>HENDI</b> <small>FOOD SERVICE EQUIPMENT</small>  <b>Hendi B.V.</b> Steenoven 21 3911 TX Rhenen The Netherlands	<b>Batch #</b>	<b>Appliance part#</b>
	660729 and up	<b>232026</b>
	<b>Description</b>	


<b>Date</b>	27-09-2016	<b>Revision #</b>	Revision version
<b>Revision</b>	First bill of materials (BOM)		

Item	Description	Part#	Quantity	Remark	Picture
1	Bottom hinge (right)	931738	1		
2	Right holder	n/a	2		
3	Front holder	n/a	6		
4	Rear middle holder	n/a	4		
5	Bottom middle hinge	n/a	1		
6	Bottom hinge (left)	931745	1		
7	Feet	931523	4		
8	Air duct board	n/a	1		
9	Condenser filter	931752	1		
10	Electric box cover	n/a	1		
11	Front panel	931769	1		
12	Digital controller Carel (Cooling)	931530	1		
13	Switch	931547	1		
14	Bottom cover	n/a	1		
15	Bracket	n/a	1		
16	Drying filter	n/a	1		
17	Junction box	n/a	1		
18	Compressor Embraco (EMT65HLR)	941515	1		
19	Fan motor 30W	931776	1		
20	Condenser	941522	1		
21	Drain pan	n/a	1		
22	Drain pipe	n/a	1		
23	Power cord	931554	1		
24	Left door	931790	1		
25	Right door	931806	2		
26	Door seal	931813	3		
27	Shelf holder set of 2 pcs (57cm)	931820	6		
28	Shelf (57x33cm)	931561	3		
29	Frame	n/a	1		
30	Upper axis	931837	3		
31	Bracket	n/a	1		
32	Mounting bracket upper cover	n/a	2		
33	Upper cover	n/a	1		

n/a -> not available

nss -> not sold separately

### Circuit diagram

 <b style="font-size: 2em; color: red;">HENDI</b> <small>FOOD SERVICE EQUIPMENT</small>  <b>Hendi B.V.</b> Steenoven 21 3911 TX Rhenen The Netherlands	<b>Batch #</b>	<b>Appliance part#</b>
	660729 and up	<b>232026</b>
	<b>Description</b>	
	Refrigerator counter with three doors Kitchen line	

<b>Date</b>	27-09-2016	<b>Revision #</b>	Revision version
<b>Revision</b>	First bill of materials (BOM)		

