
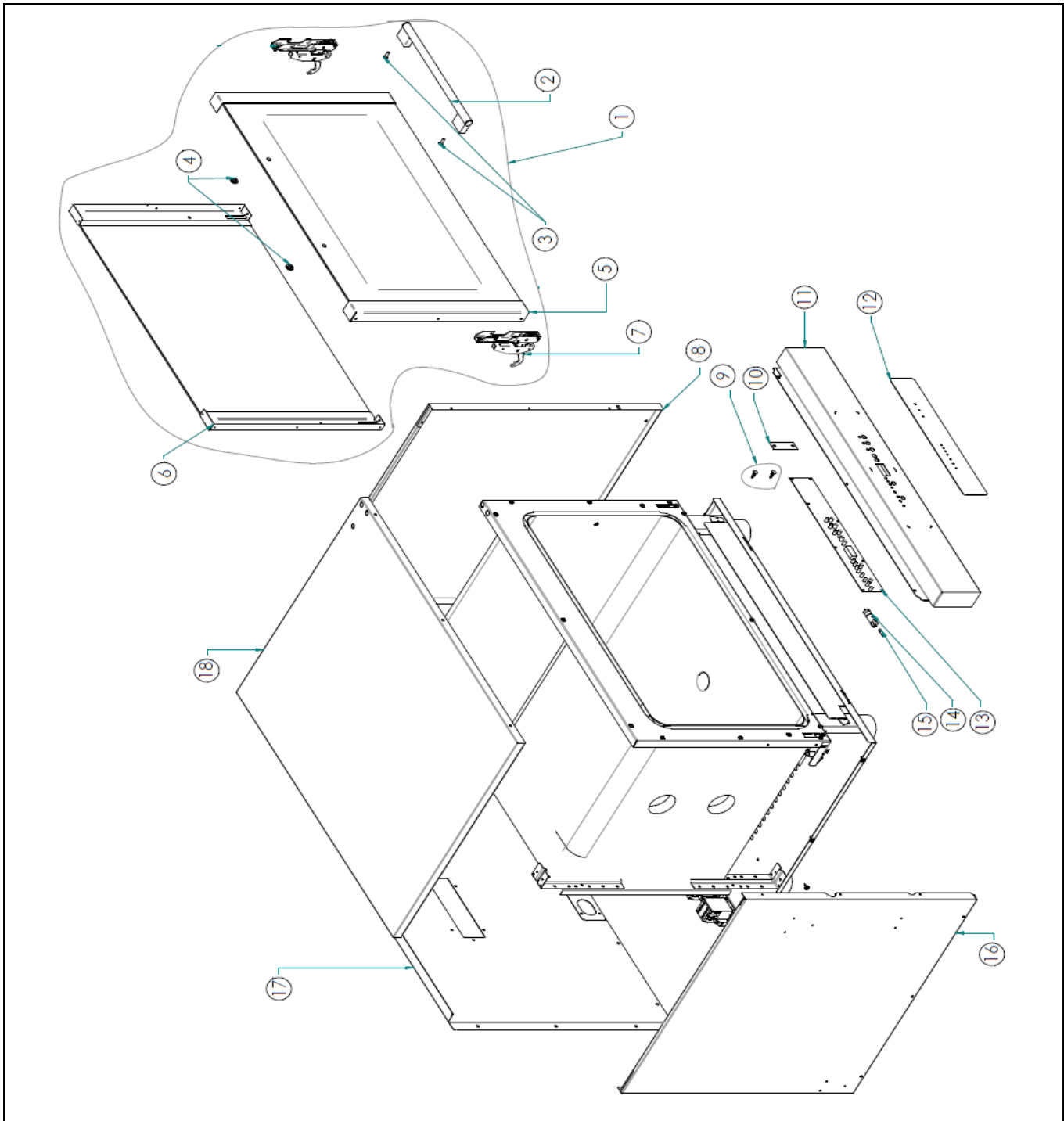



Drawing

 HENDI FOOD SERVICE EQUIPMENT	Batch #	Appliance part#
	501713 and up	225059
	Description	
	Digital oven with steam injection	

Date	02-02-2016	Revision #	Revision version
Revision	First bill of materials (BOM)		



Bill of materials (BOM)

 <p>Hendi B.V. Steenoven 21 3911 TX Rhenen The Netherlands</p>	Batch #	Appliance part#
	501713 and up	225059
	Description	
Digital oven with steam injection		


Date	02-02-2016	Revision #	Revision version
Revision	First bill of materials (BOM)		

Item	Description	Part#	Quantity	Remark	Picture
1	Door complete	934968	1	Incl item 2,3,4,5,6 and 7	
2	Door handle	nss	1	Available as 934968	
3	Bolt	nss	2	Available as 934968	
4	Washer	nss	2	Available as 934968	
5	Door glass	nss	1	Available as 934968	
6	Inner door glass	nss	1	Available as 934968	
7	Hinge	934975	2	Also in set 934986	
8	Right cover	n/a	1		
9	Bolt	n/a	2		
10	Bracket	n/a	1		
11	Display panel	n/a	1		
12	Display sticker	n/a	1		
13	Display PCB	934982	1		
14	Fuse holder	n/a	1		
15	Fuse F5x20 T80mA	n/a	1	*Obtain locally	
16	Left cover	n/a	1		
17	Back cover	n/a	1		
18	Top cover	n/a	1		

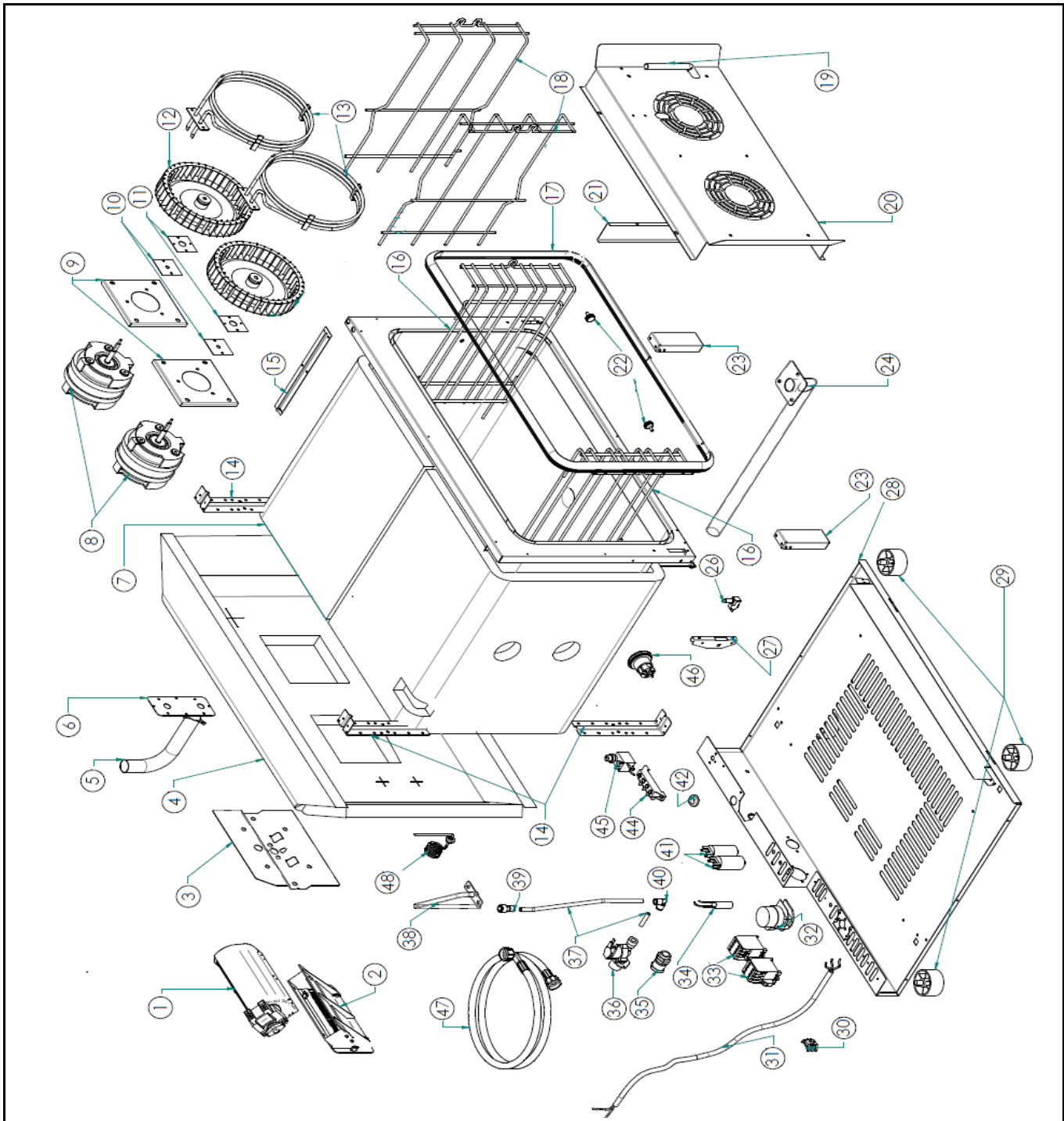
n/a -> not available

nss -> not sold separately


Drawing

 <p>HENDI FOOD SERVICE EQUIPMENT</p> <p>Hendi B.V. Steenoven 21 3911 TX Rhenen The Netherlands</p>	Batch #	Appliance part#
	501713 and up	225059
	Description	
	Digital oven with steam injection	

Date	02-02-2016	Revision #	Revision version
Revision	First bill of materials (BOM)		



Bill of materials (BOM)

 HENDI <small>FOOD SERVICE EQUIPMENT</small> Hendi B.V. Steenoven 21 3911 TX Rhenen The Netherlands	Batch #	Appliance part#
	501713 and up	225059
	Description	
Digital oven with steam injection		


Date	02-02-2016	Revision #	Revision version
Revision	First bill of materials (BOM)		

Item	Description	Part#	Quantity	Remark	Picture
1	Radial Fan	934937	1		
2	Fan cover	n/a	1		
3	Bracket	n/a	1		
4	Back cover	n/a	1		
5	Chimney	n/a	1		
6	Sealing chimney	n/a	1		
7	Insulation	n/a	1		
8	Fan motor (reverseable)	935019	2		
9	Bracket	n/a	2		
10	Insulation	n/a	2		
11	Plate	n/a	2		
12	Fan	n/a	2		
13	Element 230V 3000W	935033	2		
14	Bracket	n/a	5		
15	Bracket	n/a	1		
16	Tray support left/right (GN)	935194	2	(Set of 2pcs)	
17	Door gasket	935248	1		
18	Tray support left/right (Bakery set)	935170	2	(Set of 2pcs)	
19	Tube s/s humifider	n/a	1		
20	Deflector plate	n/a	1		
21	Bracket	n/a	1		
22	Bolt (tray support)	935224	2		
23	Cover	n/a	2		
24	Drain pipe	n/a	1		
26	Doorswitch	915431	1		
27	Hinge support	n/a	2		
28	Bottom cover	n/a	1		
29	Feet	225370	4		
30	Grounding bolt	n/a	1		
31	Power cord	n/a	1		
32	Fan timer	935149	1		
33	Relay	935071	2		
34	Interference suppressor	935132	1		
35	Pull relief	n/a	1		
36	Watervalue 1-way	935064	1		
37	Tubing	n/a	1		
38	Tubing s/s	n/a	1		
39	Connector	n/a	1		
40	Connector elbow	n/a	1		
41	Capacitor 6,3µF	935125	2		
42	Grommet	n/a	1		
44	Terminal	n/a	1		
45	Hi-limiter	935118	1		
46	Lamp fitting complete (halogen)	928493	2		
46a	Lamp halopin 40W	930106	2		
47	Water hose	n/a	1	*Obtain locally	
48	Probe	935835	1		

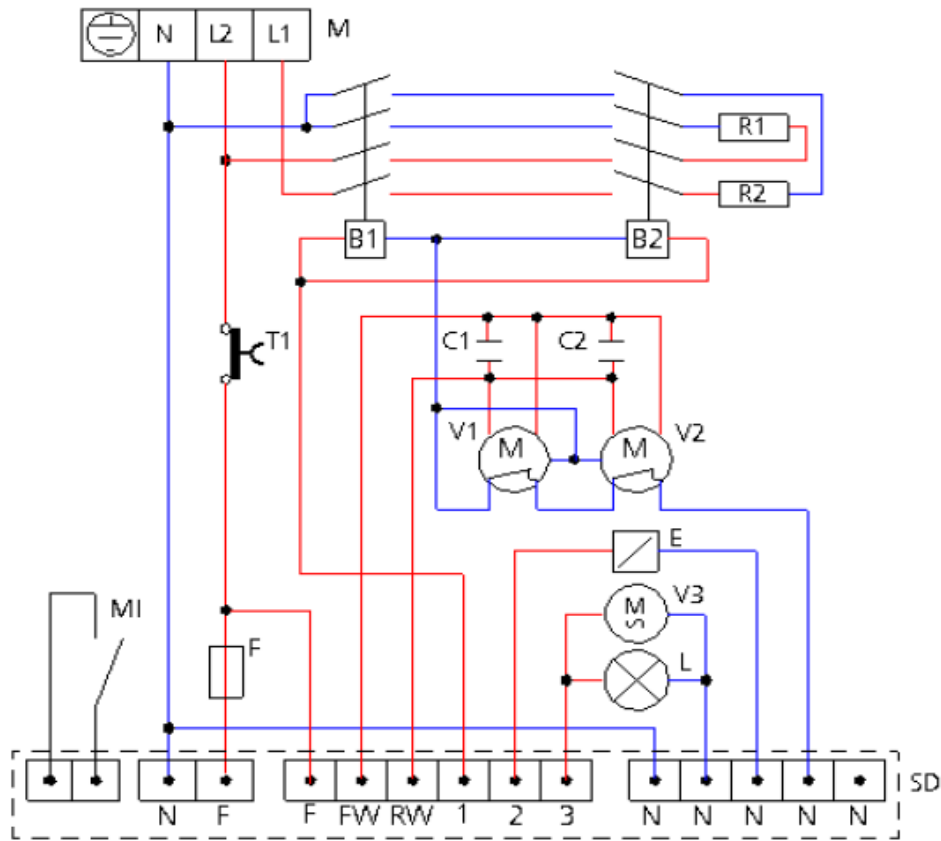
n/a -> not available

nss -> not sold separately

Circuit diagram

 <p>Hendi B.V. Steenoven 21 3911 TX Rhenen The Netherlands</p>	Batch #	Appliance part#
	501713 and up	225059
	Description	
	Digital oven with steam injection	

Date	02-02-2016	Revision #	Revision version
Revision	First bill of materials (BOM)		



Key

- | | |
|---------------------------------|--|
| M Power terminal board | B1-B2 Contactor coil |
| T1 Safety thermostat | L Oven lighting lamp |
| MI Door microswitch | R1-R2 Circular heating-elements |
| SD Electronic card | C1-C2 Capacitors |
| E Humidifier solenoid-valve | V1-V2 Radial motoventilators |
| F Fuse | V3 Tangential motorised ventilator |