

Drawing



Tools for Chefs

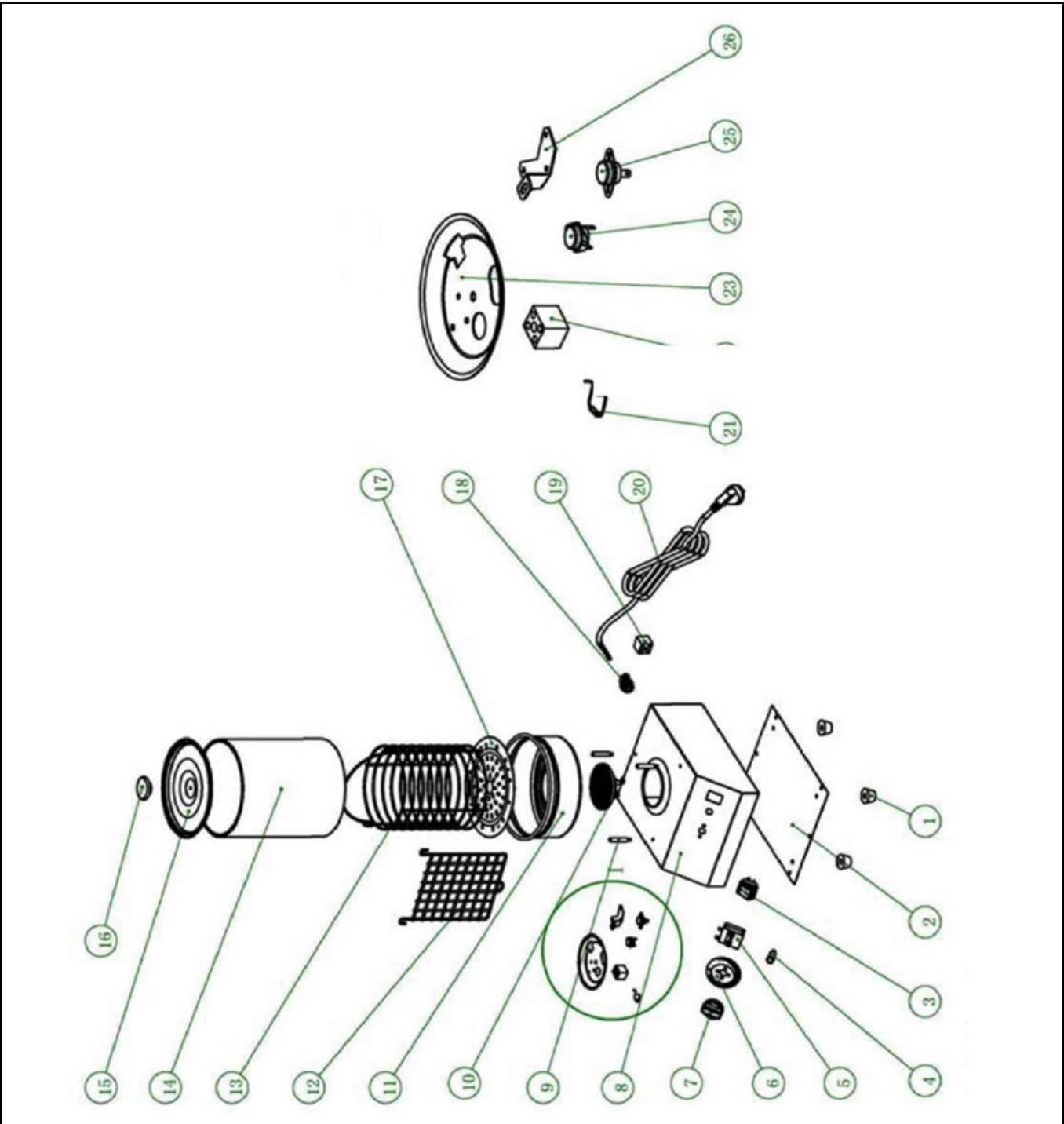
Hendi B.V.  
Steenoven 21  
3911 TX Rhenen  
The Netherlands

Batch #  
HK018622 and  
up


Appliance part#  
265000

Description  
Sausage warmer

|          |                            |            |     |
|----------|----------------------------|------------|-----|
| Date     | 06-09-2022                 | Revision # | 1.2 |
| Revision | New lid, new knob for lid. |            |     |



### Bill of materials (BOM)

|   |                    |                        |
|---|--------------------|------------------------|
|  <b style="font-size: 24px; margin-left: 10px;">HENDI</b><br><small style="color: green; margin-left: 10px;">Tools for Chefs</small><br><b>Hendi B.V.</b><br>Steenoven 21<br>3911 TX Rhenen<br>The Netherlands | <b>Batch #</b>     | <b>Appliance part#</b> |
|   | HK018622 and up    | <b>265000</b>          |
|   | <b>Description</b> |                        |
| <b>Sausage warmer</b>   |                    |                        |


|                 |                            |                   |     |
|-----------------|----------------------------|-------------------|-----|
| <b>Date</b>     | 06-09-2022                 | <b>Revision #</b> | 1.2 |
| <b>Revision</b> | New lid, new knob for lid. |                   |     |

| Item | Description                              | Part#  | Quantity | Remark              | Picture |
|------|--|--------|----------|---------------------|---------|
| 1    | Feet                                     | 921159 | 4        |                     |         |
| 2    | Bottom cover                             | n/a    | 1        |                     |         |
| 3    | Switch                                   | 205426 | 1        |                     |         |
| 4    | Indicator light                          | 921111 | 1        |                     |         |
| 5    | Energy regulator                         | 201121 | 1        |                     |         |
| 6    | Graduation plate                         | nss    | 1        | Available as 921104 |         |
| 7    | Knob                                     | 921104 | 1        | Incl item 6         |         |
| 8    | Housing                                  | n/a    | 1        |                     |         |
| 9    | Pin                                      | n/a    | 3        |                     |         |
| 10   | Heating element                          | 930298 | 1        |                     |         |
| 11   | Water pan                                | 930304 | 1        |                     |         |
| 12   | Grid                                     | nss    | 1        | Available as 930359 |         |
| 13   | Grid complete                            | 930359 | 1        | Incl item 12 and 17 |         |
| 14   | Glas cilinder                            | 921135 | 1        |                     |         |
| 15   | Lid                                      | 957035 | 1        | Incl item 16        |         |
| 16   | Knob lid                                 | nss    | 1        | Available as 930311 |         |
| 17   | Lower grid                               | nss    | 1        | Available as 930359 |         |
| 18   | Inlet with retention                     | 912201 | 1        |                     |         |
| 19   | Terminal                                 | 922545 | 1        |                     |         |
| 20   | Power cord H05RN-F 3Gx1,0mm <sup>2</sup> | 930038 | 1        |                     |         |
| 21   | Thermal fuse 240°C                       | 930328 | 1        |                     |         |
| 22   | Terminal                                 | 922545 | 1        |                     |         |
| 23   | Cover element                            | n/a    | 1        |                     |         |
| 24   | Clixon 190°C                             | 930335 | 1        |                     |         |
| 25   | Clixon 220°C                             | 930342 | 1        |                     |         |
| 26   | Bracket                                  | n/a    | 1        |                     |         |
|      |  |        |          |                     |         |
|      |  |        |          |                     |         |

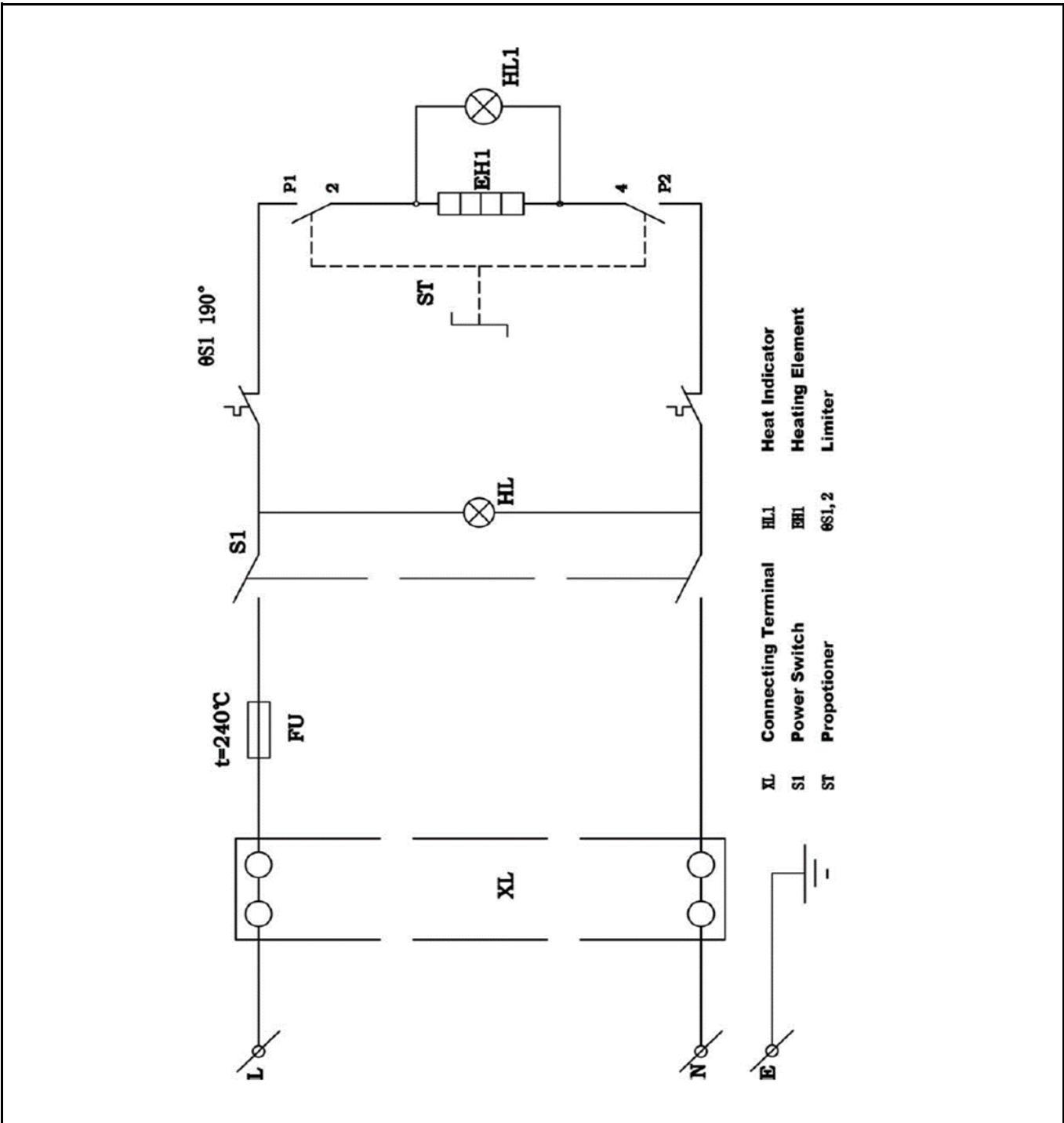
n/a -> not available

nss -> not sold separately


**Circuit diagram**

|   |                    |                        |
|---|--------------------|------------------------|
|  <b>HENDI</b><br>Tools for Chefs<br><b>Hendi B.V.</b><br>Steenoven 21<br>3911 TX Rhenen<br>The Netherlands | <b>Batch #</b>     | <b>Appliance part#</b> |
|   | HK018622 and up    | <b>265000</b>          |
|   | <b>Description</b> |                        |
|   | Sausage warmer     |                        |

|                 |                            |                   |     |
|-----------------|----------------------------|-------------------|-----|
| <b>Date</b>     | 06-09-2022                 | <b>Revision #</b> | 1.2 |
| <b>Revision</b> | New lid, new knob for lid. |                   |     |



## Wiring diagram

|  |                    |                        |
|--|--------------------|------------------------|
|  <b style="font-size: 24px; margin-left: 10px;">HENDI</b><br><span style="color: #90EE90; font-size: 12px; margin-left: 10px;">Tools for Chefs</span><br><b>Hendi B.V.</b><br>Steenoven 21<br>3911 TX Rhenen<br>The Netherlands | <b>Batch #</b>     | <b>Appliance part#</b> |
|  | HK018622 and up    | <b>265000</b>          |
|  | <b>Description</b> |                        |
| <b>Sausage warmer</b>  |                    |                        |

|                 |                            |                   |     |
|-----------------|----------------------------|-------------------|-----|
| <b>Date</b>     | 06-09-2022                 | <b>Revision #</b> | 1.2 |
| <b>Revision</b> | New lid, new knob for lid. |                   |     |

