

Drawing

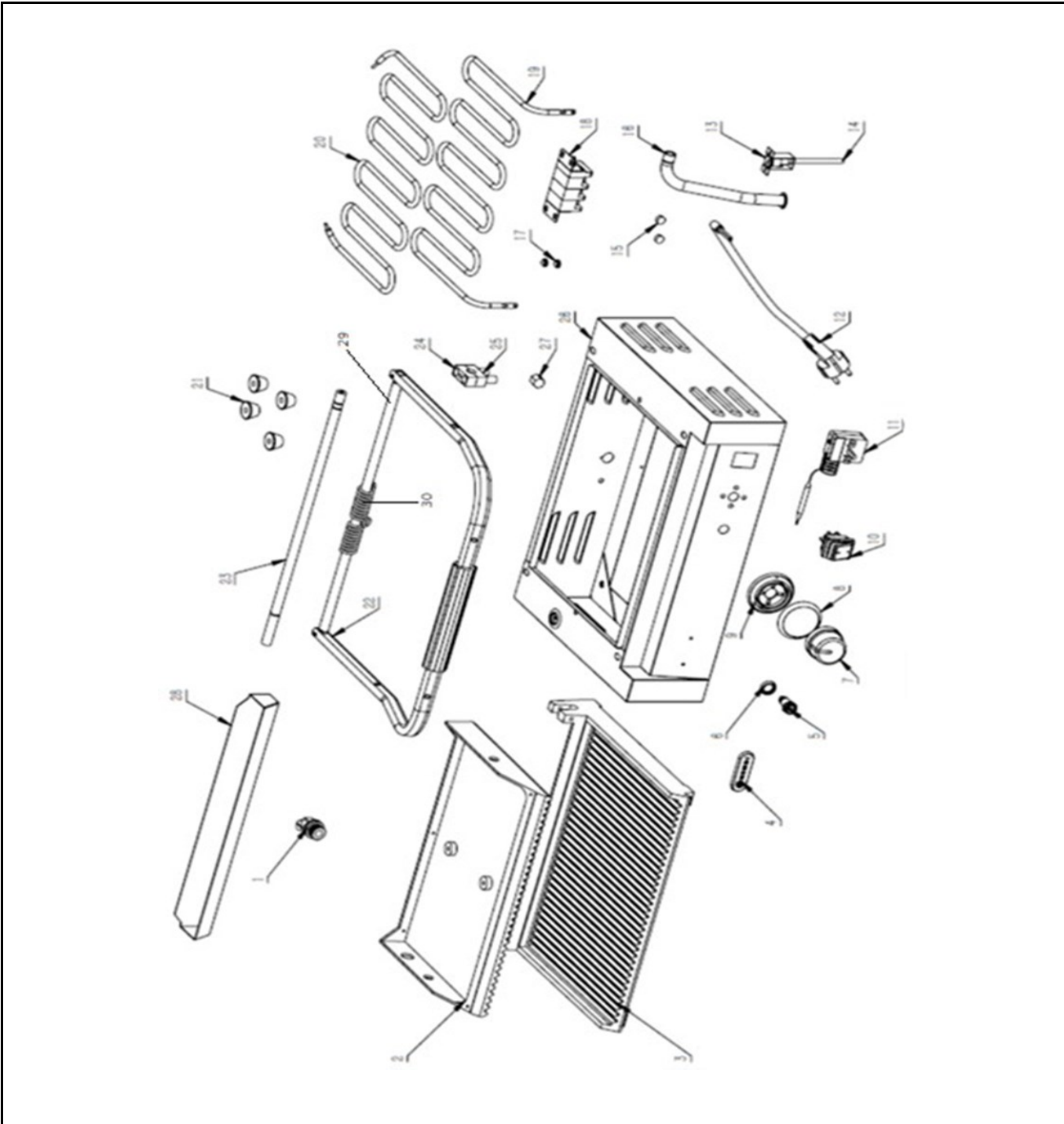


Tools for Chefs


Hendi B.V.
 Steenoven 21
 3911 TX Rhenen
 The Netherlands

Batch #	Appliance part#
HK073319 and up	263655
Description	
Contact grill "Panini"	

Date	03-05-2021	Revision #	1.2
Revision	Updated knob and circuit diagram.		



Bill of materials (BOM)

 <b style="font-size: 24px; margin-left: 10px;">HENDI Tools for Chefs Hendi B.V. Steenoven 21 3911 TX Rhenen The Netherlands	Batch #	Appliance part#
	HK073319 and up	263655
	Description	
Contact grill "Panini"		


Date	03-05-2021	Revision #	1.2
Revision	Updated knob and circuit diagram.		

Item	Description	Part#	Quantity	Remark	Picture
1	Cord inlet with retention	912201	1		
2	Upper grill plate (ribbed)	n/a	1		
3	Lower grill plate (ribbed)	n/a	1		
4	Logo badge Hendi	955963	1		
5	Indicator light (orange)	930533	1		
6	O-ring	nss	1	Available as 930533	
7	Knob thermostat	942222	1	Incl. item 8,9 and 27	
8	Knob scale ring	nss	1	Available as 942222	
9	Knob ground plate	nss	1	Available as 942222	
10	Switch	205426	1		
11	Thermostat	902011	1		
12	Power cord	912027	1		
13	Hi-limiter	902004	1		
14	Reset pin	902042	1		
15	Handle plug	nss	2		
16	Wire guide tube	n/a	1		
17	Silicone plug	nss	2		
18	Terminal	912041	1		
19	Heating element (bottom)	902035	1		
20	Heating element (top)	902028	1		
21	Feet	912058	1	Set of 4	
22	Frame of handle	912034	1	Includes handle	
*	Screw with domed nut (M6X25)	927472	2		
23	Lift axle	n/a	1		
24	Brake assembly	932278	1	Incl. item 25	
25	Lower brake	nss	1	Available as 932278	
26	Housing	n/a	1		
27	Knob insert	nss	1	Available as 942222	
28	Drip tray	263990	1		
29	Back axle	902226	1		
30	Torsion spring	901908	1		

n/a -> not available

nss -> not sold separately

Circuit diagram

 <b style="font-size: 24px; margin-left: 10px;">HENDI Tools for Chefs Hendi B.V. Steenoven 21 3911 TX Rhenen The Netherlands	Batch #	Appliance part#
	HK073319 and up	263655
	Description	
	Contact grill "Panini"	

Date	03-05-2021	Revision #	1.2
Revision	Updated knob and circuit diagram.		

