

Drawing



Tools for Chefs

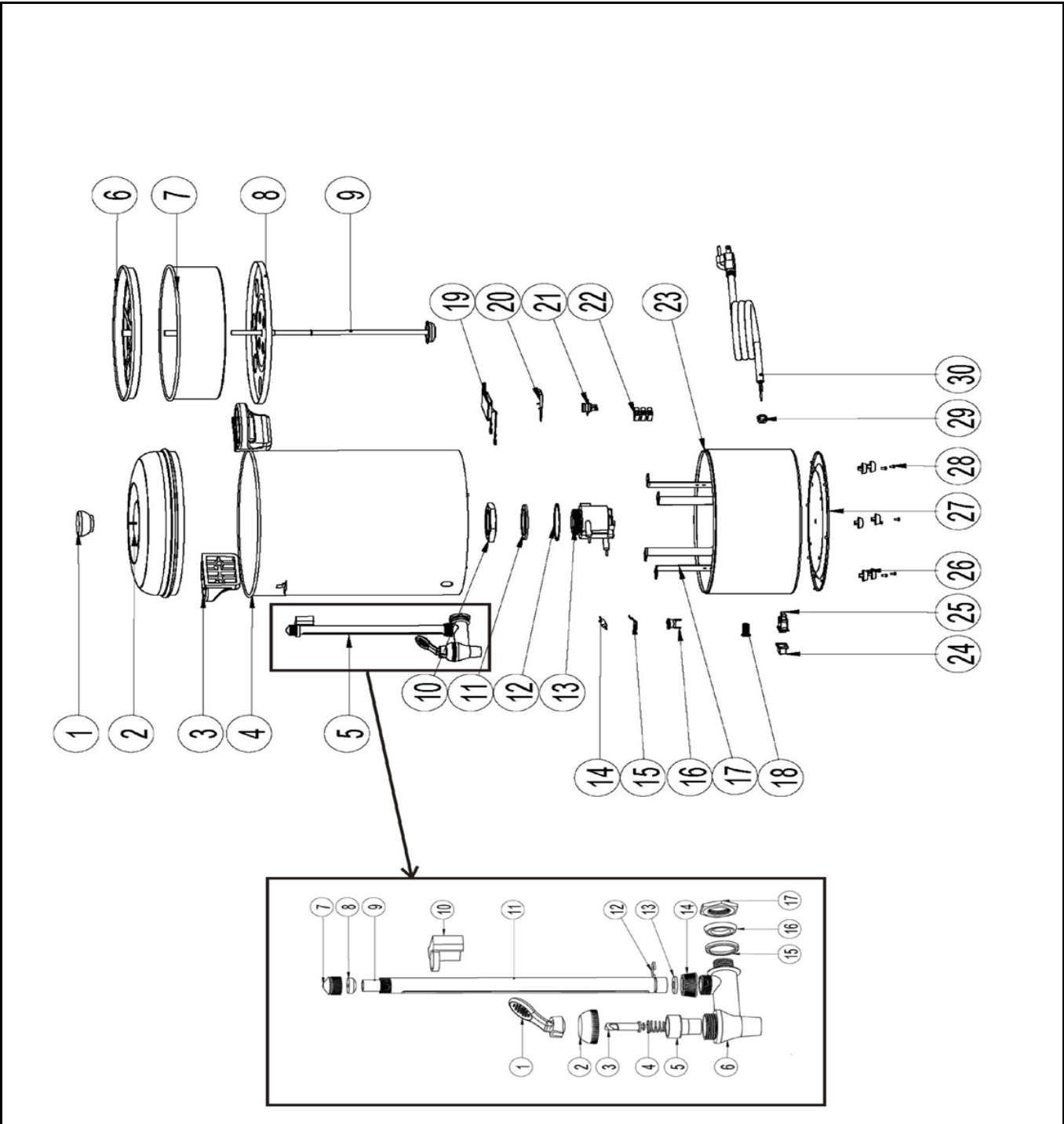
Hendi B.V.  
 Steenoven 21  
 3911 TX Rhenen  
 The Netherlands

Batch #  
 101923 and up


Appliance part#  
 208205

Description  
 Percolator 15L

|          |                |            |     |
|----------|----------------|------------|-----|
| Date     | 21-10-2020     | Revision # | 1.1 |
| Revision | New power cord |            |     |



### Bill of materials (BOM)

|  |                    |                        |
|--|--------------------|------------------------|
|  <b style="font-size: 24pt; margin-left: 10px;">HENDI</b><br><span style="font-size: 10pt; color: green; margin-left: 10px;">Tools for Chefs</span><br><b>Hendi B.V.</b><br>Steenoven 21<br>3911 TX Rhenen<br>The Netherlands | <b>Batch #</b>     | <b>Appliance part#</b> |
|  | 101923 and up      | <b>208205</b>          |
|  | <b>Description</b> |                        |
| <b>Percolator 15L</b>  |                    |                        |


|                 |                |                   |     |
|-----------------|----------------|-------------------|-----|
| <b>Date</b>     | 21-10-2020     | <b>Revision #</b> | 1.1 |
| <b>Revision</b> | New power cord |                   |     |

| Item | Description                    | Part#  | Quantity | Remark                             | Picture |
|------|--------------------------------|--------|----------|------------------------------------|---------|
| 1    | Knob                           | nss    | 1        | Available as 901236                |         |
| 2    | Lid                            | 901236 | 1        |                                    |         |
| 3    | Handle                         | 926239 | 2        |                                    |         |
| 4    | Container                      | n/a    | 1        |                                    |         |
| 5    | Graduation complete set        | 900260 | 1        | (item 5-1 to 5-17)                 |         |
| 5-1  | Lever                          | nss    | 1        | Available in set 208038 and 900260 |         |
| 5-2  | Nut                            | nss    | 1        | Available in set 208038 and 900260 |         |
| 5-3  | Axle                           | nss    | 1        | Available in set 208038 and 900260 |         |
| 5-4  | Spring                         | nss    | 1        | Available in set 208038 and 900260 |         |
| 5-5  | Silicone gasket                | nss    | 1        | Available in set 208038 and 900260 |         |
| 5-6  | Faucet                         | 208038 | 1        | Also available in set 900260       |         |
| 5-7  | Nut                            | nss    | 1        | Available in set 900260            |         |
| 5-8  | Gasket (graduation glass)      | 208496 | 1        | Also available in set 900260       |         |
| 5-9  | Graduation glass               | 900598 | 1        | Also available in set 900260       |         |
| 5-10 | Holder (pipe graduation glass) | nss    | 1        | Available in set 900260            |         |
| 5-11 | Pipe graduation glass          | nss    | 1        | Available in set 900260            |         |
| 5-12 | Ring                           | nss    | 1        | Available in set 900260            |         |
| 5-13 | Gasket (graduation glass)      | 208496 | 1        | Also available in set 900260       |         |
| 5-14 | Nut                            | nss    | 1        | Available in set 208038 and 900260 |         |
| 5-15 | Plastic ring                   | nss    | 1        | Available in set 208038 and 900260 |         |
| 5-16 | Gasket                         | nss    | 1        | Available in set 208038 and 900260 |         |
| 5-17 | Nut                            | nss    | 1        | Available in set 208038 and 900260 |         |
| 6    | Filter cover                   | nss    | 1        | Available as 900291                |         |
| 7    | Filter basket                  | 900291 | 1        |                                    |         |
| 8    | Tray                           | 910818 | 1        |                                    |         |
| 9    | Pumpbar                        | 900550 | 1        |                                    |         |
| 10   | Nut element                    | nss    | 1        | Available as 900116                |         |
| 11   | Gasket element                 | nss    | 1        | Available as 900116                |         |
| 12   | Washer element                 | nss    | 1        | Available as 900116                |         |
| 13   | Element 1500W                  | 900116 | 1        |                                    |         |
| 14   | Thermal fuse                   | 900345 | 1        |                                    |         |
| 15   | Holder (thermal fuse)          | n/a    | 1        |                                    |         |
| 16   | Clixon (88 degrees celc.)      | 900147 | 1        |                                    |         |
| 17   | Holder bottom cover            | n/a    | 1        |                                    |         |
| 18   | Indication light               | 902059 | 1        |                                    |         |
| 19   | Element 80W                    | 904268 | 2        |                                    |         |
| 20   | Holder element                 | n/a    | 2        |                                    |         |
| 21   | Clixon (200 degrees celc.)     | 900277 | 1        |                                    |         |
| 22   | Terminal block                 | 926246 | 1        |                                    |         |
| 23   | Lower base                     | n/a    | 1        |                                    |         |
| 24   | Cover switch                   | n/a    | 1        |                                    |         |
| 25   | Switch                         | 900123 | 1        |                                    |         |
| 26   | Feet                           | 900574 | 4        | Sold per pcs                       |         |
| 27   | Bottom cover                   | n/a    | 1        |                                    |         |
| 28   | Pin feet                       | nss    | 4        | Available as 900574                |         |
| 29   | Cord retention                 | n/a    | 1        |                                    |         |
| 30   | Powercord                      | 900680 | 1        |                                    |         |
|      |                                |        |          |                                    |         |
|      |                                |        |          |                                    |         |

n/a -> not available

nss -> not sold separately

### Circuit diagram

|  |                       |                        |
|--|-----------------------|------------------------|
|  <b style="font-size: 24px; margin-left: 10px;">HENDI</b><br><span style="color: #808000; font-size: 12px; margin-left: 20px;">Tools for Chefs</span><br><b>Hendi B.V.</b><br>Steenoven 21<br>3911 TX Rhenen<br>The Netherlands | <b>Batch #</b>        | <b>Appliance part#</b> |
|  | 101923 and up         | <b>208205</b>          |
|  | <b>Description</b>    |                        |
|  | <b>Percolator 15L</b> |                        |

|                 |                |                   |     |
|-----------------|----------------|-------------------|-----|
| <b>Date</b>     | 21-10-2020     | <b>Revision #</b> | 1.1 |
| <b>Revision</b> | New power cord |                   |     |

