

Drawing



Tools for Chefs

Hendi B.V.

Steenoven 21
3911 TX Rhenen
The Netherlands

Batch #

000000 until
HK093920

Appliance part#

205853

Description

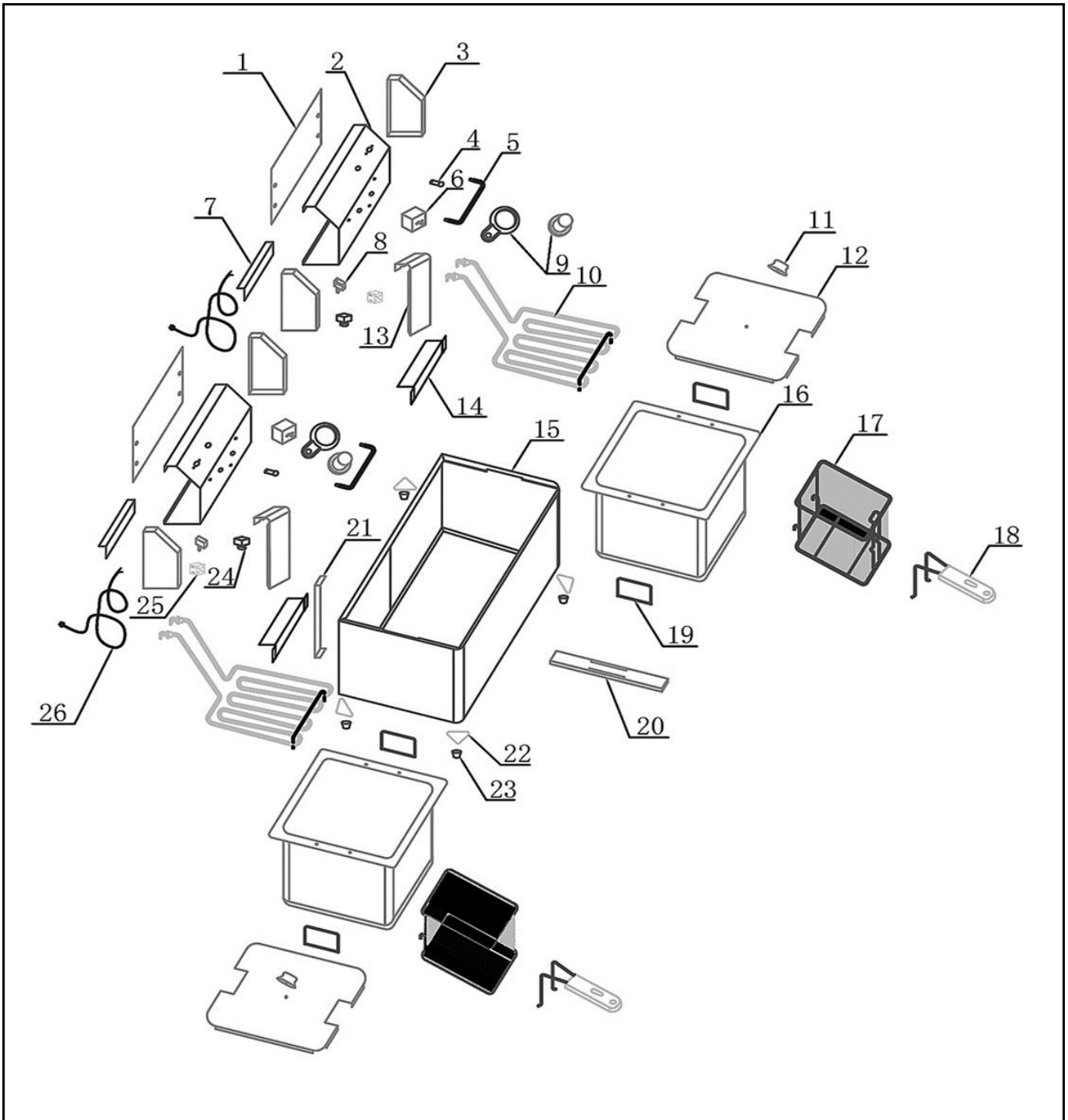
Deep fryer 2X6L Blue Line

Date 29-04-2021


Revision #

1.0

Revision First Bill of Materials (BOM)



Bill of materials (BOM)

 <b style="font-size: 24px; margin-left: 10px;">HENDI Tools for Chefs Hendi B.V. Steenoven 21 3911 TX Rhenen The Netherlands	Batch #	Appliance part#
	000000 until HK093920	205853
	Description	
Deep fryer 2X6L Blue Line		


Date	29-04-2021	Revision #	1.0
Revision	First Bill of Materials (BOM)		

Item	Description	Part#	Quantity	Remark	Picture
1	Back cover	n/a	2		
2	Front cover	n/a	2		
3	Side cover	n/a	4		
4	Indicator light	930533	2		
5	Bracket	n/a	2		
6	Thermostat	930557	2		
7	Bracket	n/a	2		
8	Microswitch	930571	2		
9	Knob	930564	2		
10	Element	930625	2		
11	Knob for lid	940402	2	Color may differ from original.	
12	Lid	n/a	2		
13	Bracket	n/a	2		
14	Support	n/a	2		
15	Frame	n/a	1		
16	Fryer bassin	n/a	2		
17	Fryer basket	930632	2	Incl item 18	
18	Handle fryer basket	nss	2	Available as 930656	
19	Handle	n/a	4		
20	Bracket	n/a	1		
21	Bracket	n/a	1		
22	Support plate	n/a	4		
23	Feet	930588	4		
24	Hi-Limiter	930595	2		
25	Terminal	930540	2		
26	Power cord	930045	2		
*	Probe holder	930663	4	(Not shown on exploded view)	

n/a -> not available

nss -> not sold separately

Circuit diagram

 <b style="font-size: 24px; margin-left: 10px;">HENDI Tools for Chefs Hendi B.V. Steenoven 21 3911 TX Rhenen The Netherlands	Batch #	Appliance part#
	000000 until HK093920	205853
	Description	
	Deep fryer 2X6L Blue Line	

Date	29-04-2021	Revision #	1.0
Revision	First Bill of Materials (BOM)		

